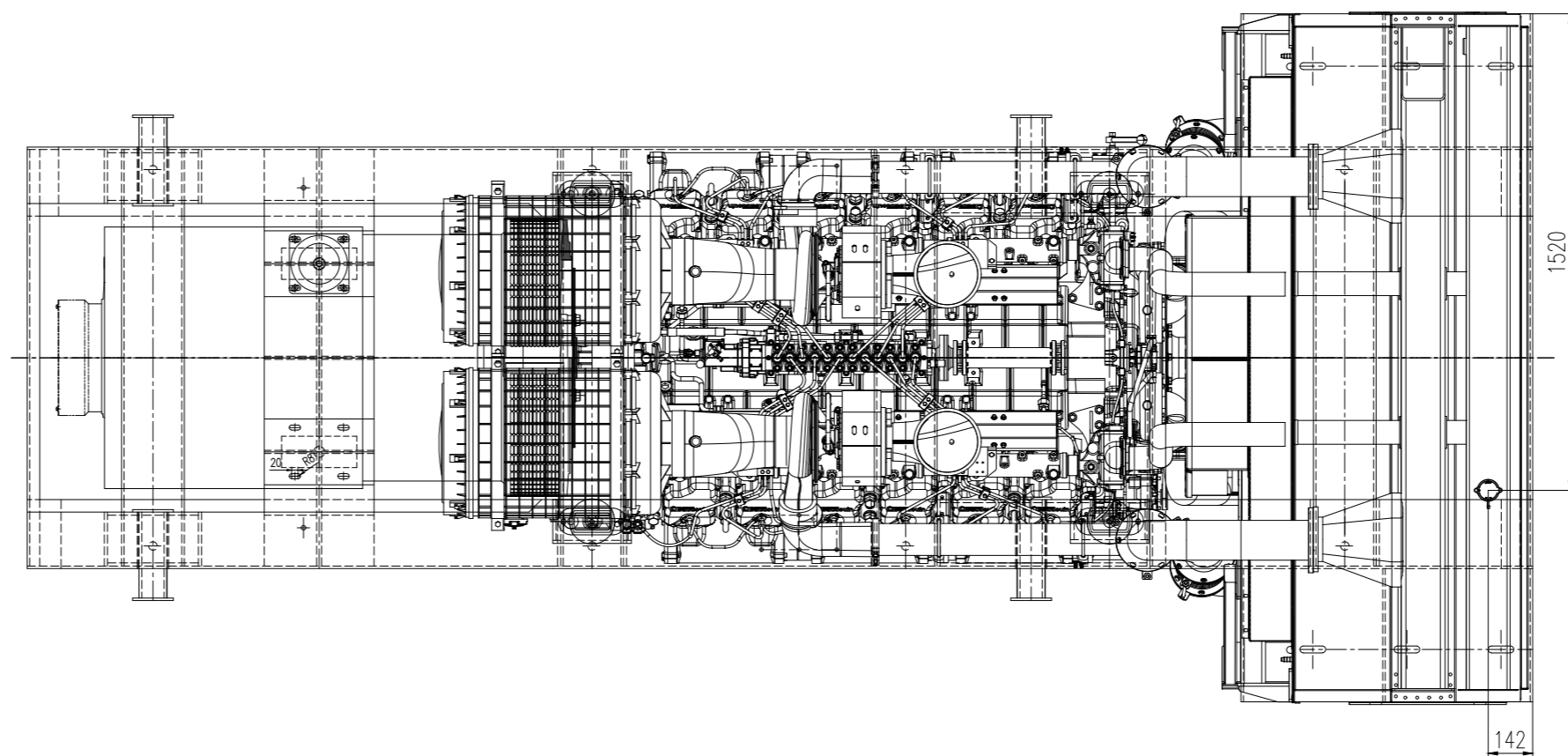
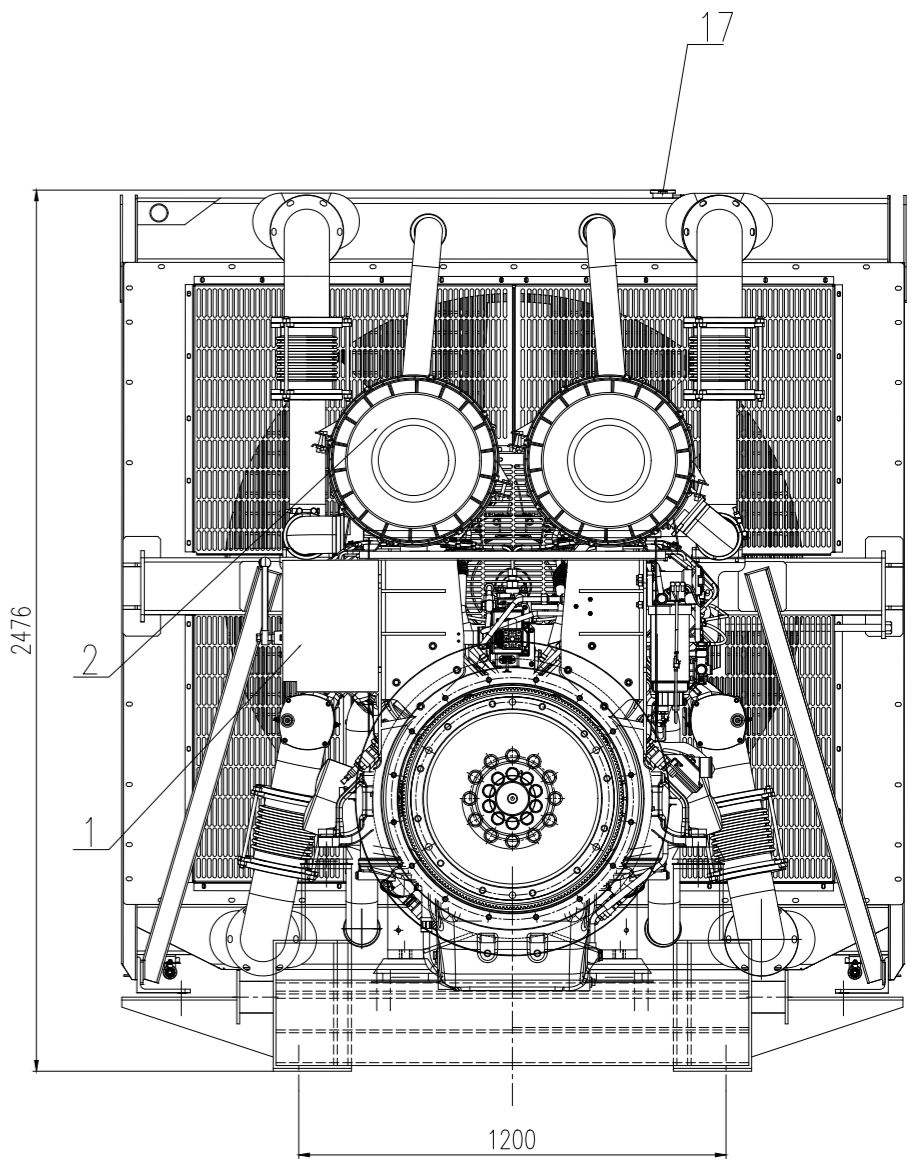
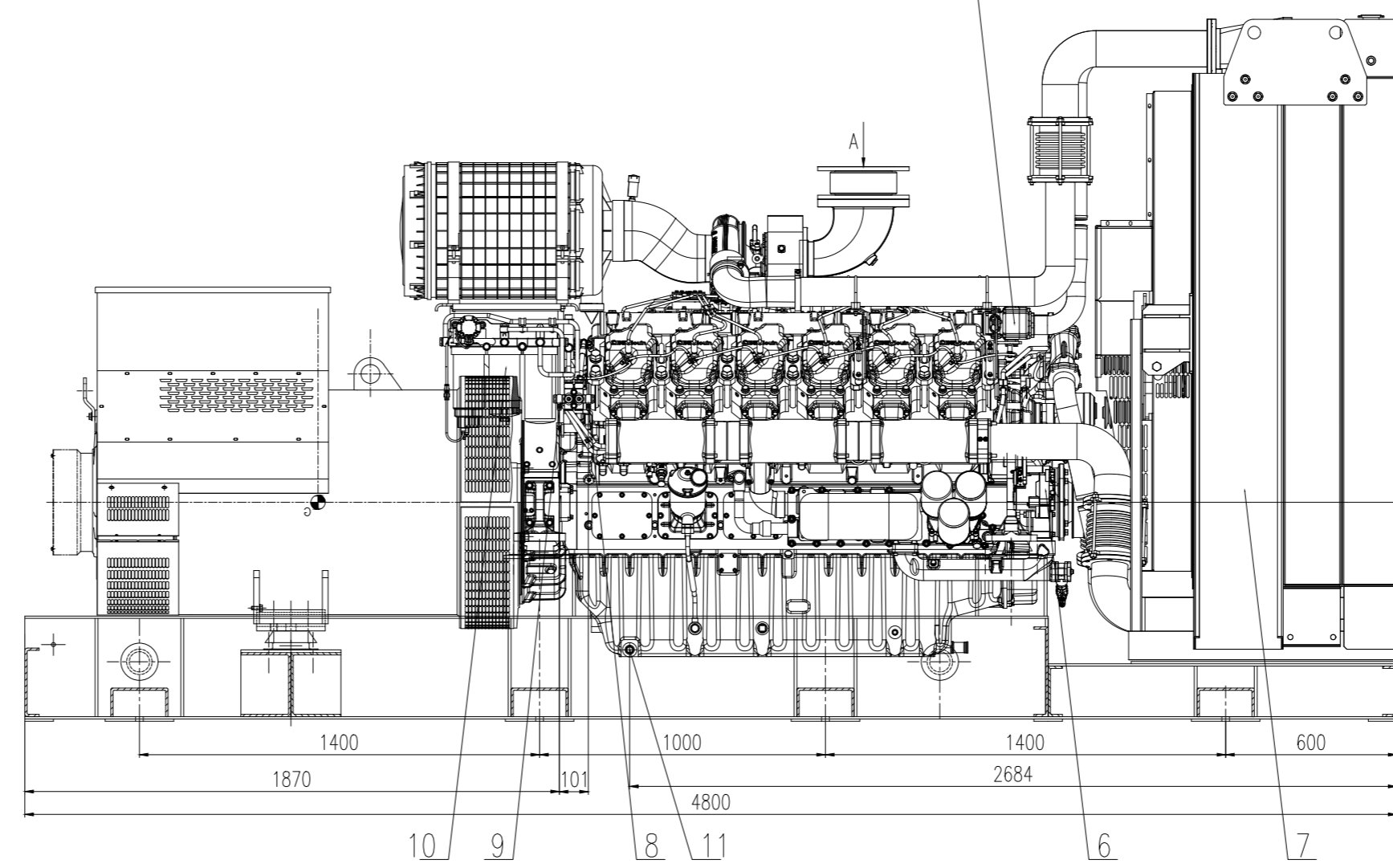
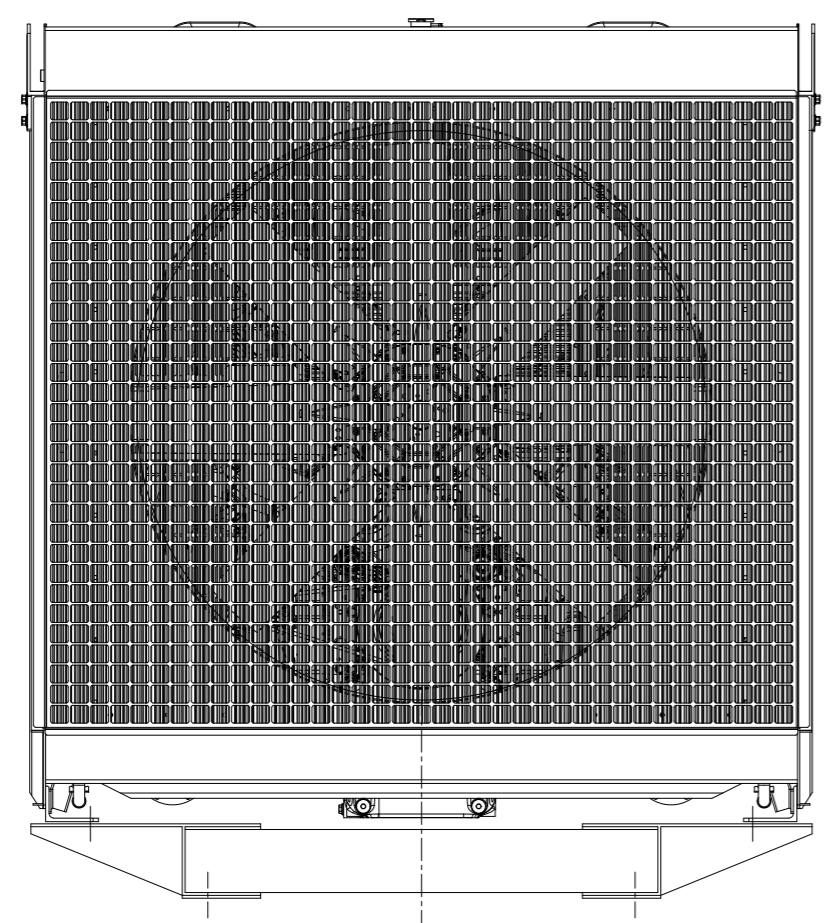
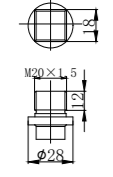


特别声明
 NOTICE

1. 图纸修改不另行通知, 请在使用前与我们确认。
 This drawing can be subject to modification without notice, Please consult us before using.
2. 此图纸归潍柴所有, 未经允许不得复印、使用或传阅。
 This drawing belongs to Weichai, and shall not be copied, used or circulated without permission.
3. 外观尺寸、重量仅供参考。
 The appearance size and weight are for reference only.

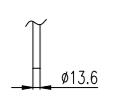


⑪ 放油螺塞
 Drain plug



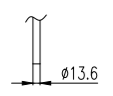
⑨ 燃油进油口
 Fuel inlet

接内径 $\phi 13$ 油管
 Connected to oil pipe
 with inner diameter $\phi 13$

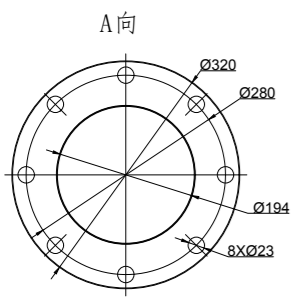


⑧ 燃油回油口
 Fuel return

接内径 $\phi 13$ 油管
 Connected to oil pipe
 with inner diameter $\phi 13$



⑫ 膨胀节排气法兰
 Expansion Joint



主要的外部接口尺寸

| | | | |
|-------------|--------------------------------|-------------|--|
| 19 | 油滤盖 Oil filter cap | 20 | 膨胀节 Expansion Joint |
| 17 | 冷却液加注盖 Coolant filler cap | 18 | 限位开关 Dipstick |
| 15 | 锚固螺栓 Anchor bolt hole | 16 | 冷却液温度传感器 Coolant temperature sensor |
| 13 | 油滤 Oil filter | 14 | 转速传感器 Speed sensor |
| 11 | 放油螺塞 Drain plug | 12 | 起动机 Starter |
| 9 | 燃油进油口 Fuel inlet | 10 | 燃油滤 Fuel filter |
| 7 | 散热器 Radiator | 8 | 燃油回油口 Fuel return |
| 5 | 节温器 Thermostat | 6 | 充电发电机 Charging generator |
| 3 | 机油压力传感器 Oil pressure sensor | 4 | 出水口 Water outlet |
| 1 | 控制面板 Control panel | 2 | 空气滤清器 Air filter |
| 序号 Index | 名称 Name | 序号 Index | 名称 Name |

| | | | |
|--------------------------|----------------|------------------|-----------------|
| 名称Name | | 图号Drawing No. | |
| WPG1250B7五视图 | | WPG1400B7五视图 | |
| WPG1700B7五视图 | | WPG1700B7五视图 | |
| 状态/State | 幅面/Format | 重量/Weight | |
| | A1 | kg | |
| 页码Sheet/Of 1/1 | 比例/Scale | DRAWING SCALE | |
| 投影法 Projection Method | | | |
| 材料Material | | | |
| 标记 Sign | 次数 Amount | 更改文件 Document | 签字 Signature |
| 设计/绘图 Design/Draw | 工艺 Tech | 日期 Date | |
| 质量 Quality | 标准化 Stand. | 日期 Date | |
| 校对 Corrected | 批准 Approved | | |
| 审核 Examined | | | |