

## INDUSTRIAL RANGE POWER PRODUCTS

50HZ 60HZ

6kVA - 830kVA | 5kW - 750kW

THE ENERGY SOLUTION FOR YOUR INDUSTRIAL APPLICATIONS

**KOHLER**<sup>®</sup>  
**SDMO**<sup>®</sup>

PPR-IN-DO-EN-72





## KOHLER-SDMO, THE BEST ENERGY SOLUTIONS ON THE MARKET

From offshore drilling platforms to harsh desert conditions, from building sites to the most exacting industries, KOHLER-SDMO generating sets have proven their performance and reliability time and time again. They have made the company one of the top global manufacturers, consolidating its leadership every day through the support of an international group.

Focusing exclusively on generating sets, KOHLER-SDMO now offers the widest range on the market. Thanks to the proximity of its distribution network, KOHLER-SDMO can offer electricity solutions for all, anytime and anywhere. **In addition to its role as an industrial manufacturer of generating sets, KOHLER-SDMO is now positioning itself as a serious energy supplier.**

## NATIONAL COVERAGE, INTERNATIONAL PRESENCE. THINK GLOBALLY, ACT LOCALLY

In order for KOHLER-SDMO to continue to grow and meet the needs of new markets, it relies on:

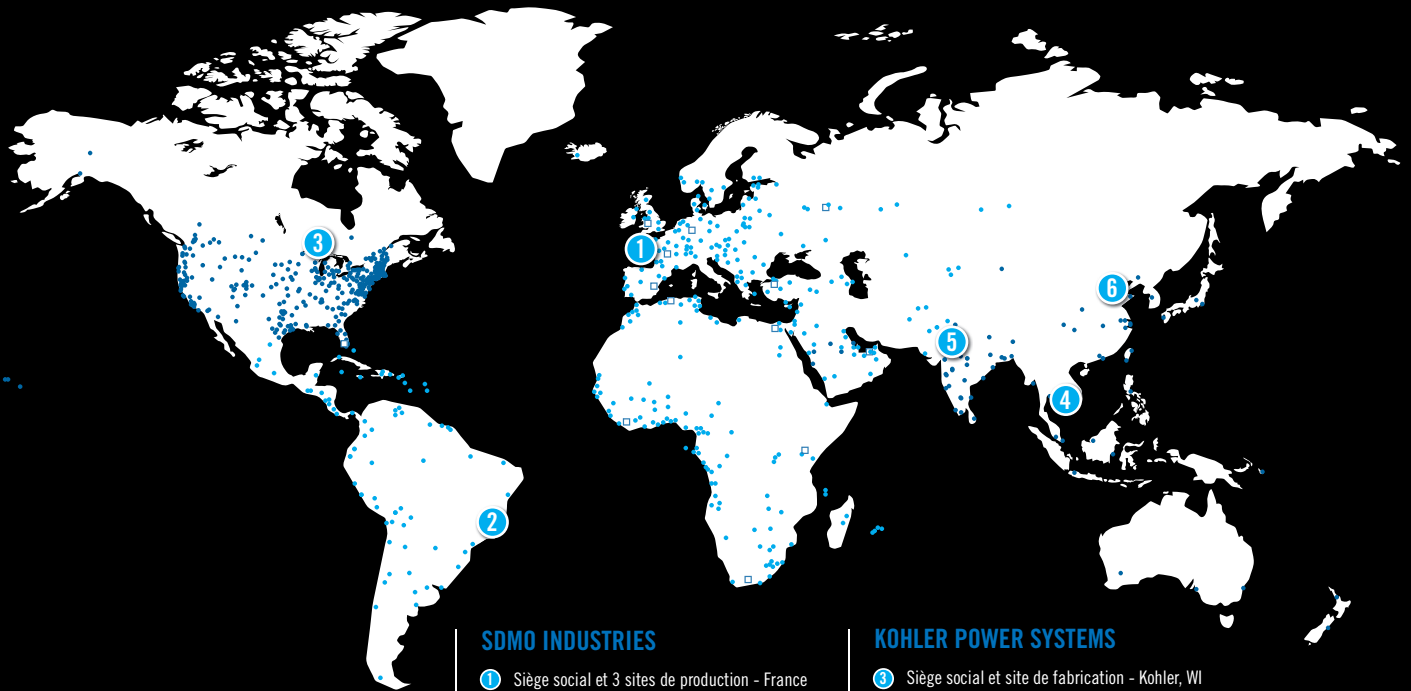
- ▶ **8 sales offices and 3 regional divisions in France;**

Globally:

- ▶ **a distribution network covering over 150 countries,**
- ▶ **6 subsidiaries,**
- ▶ **6 offices.**

The responsiveness of the company is also based on its development of 8 storage platforms which, in co-operation with the subsidiaries, constitute an efficient commercial network.

Now that KOHLER and SDMO have joined forces, you are guaranteed to benefit from this fruitful partnership thanks to the increased presence of KOHLER-SDMO locations in your area.



### SDMO INDUSTRIES

- ① Siège social et 3 sites de production - France
- ② Site de production - Brésil
- Distributeurs
- Implantations SDMO Industries

### KOHLER POWER SYSTEMS

- ③ Siège social et site de fabrication - Kohler, WI
- ④ Siège social et site de fabrication - Singapour
- ⑤ Site de fabrication - Inde
- ⑥ Site de fabrication - Chine
- Bureaux de représentation, concessionnaires et distributeurs

## KOHLER-SDMO EXPERTISE BENEFITING THE POWER PRODUCTS RANGE

KOHLER-SDMO invests heavily in Research & Development, with a view to anticipating demand and offering you the most innovative and high-performance energy solutions on the market.

### AN INTEGRATED R&D FUNCTION

#### ► DESIGN OFFICES USING THE LATEST TECHNICAL INNOVATIONS

The engineering and design offices design products inspired by market trends, guided by the marketing department. These teams undergo continuous training in the latest 3D tools for modeling, structural and stress calculation and thermodynamic and acoustic simulation.

#### ► A CUTTING EDGE LABORATORY

KOHLER-SDMO invests in cutting edge technologies, with a view to developing bespoke products and solutions. Thanks to their world-renowned expertise, our teams work every day to optimize the performance of the generating sets and their components. Our independent laboratory responds to the latest demands and benefits from specialist infrastructures that cover an area of 2000 m<sup>2</sup>.

#### ► A MODERN FACTORY



Covering over 38,000 m<sup>2</sup>, the KOHLER-SDMO factory is equipped with state-of-the-art operational hardware. The company's teams of specialists closely monitor the assembly of components.



Tous les produits SDMO Industries sont certifiés par un laboratoire accrédité ISO 17025







## AN ADAPTED "PRODUCT" RESPONSE

KOHLER-SDMO does not compromise when it comes to the quality of its products and their compliance with standards. They are designed to meet even more demanding criteria in terms of safety and use than those actually required by current regulations. To reach these objectives, components are selected with care from partner manufacturers who are amongst the most well-known and safest on the market.

THE BALANCE IS STRUCK BETWEEN POWER,  
EXTREME CLIMATE CONDITIONS  
AND SOUND LEVELS

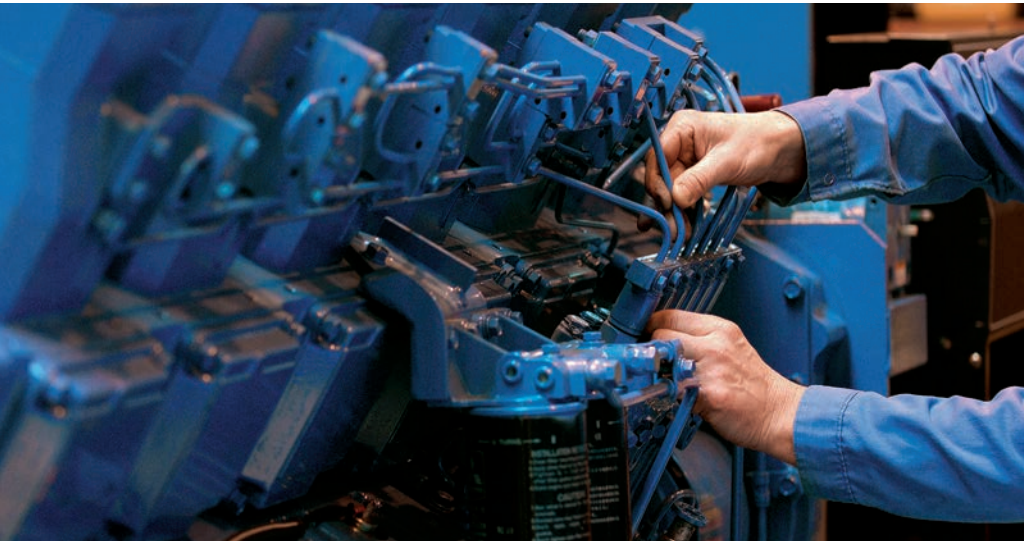
One of the most crucial points when designing generating sets is to be able to offer optimum power combined with a low sound level which may be under extreme climatic conditions. KOHLER-SDMO has managed to find the perfect balance between these three factors thanks to in depth studies carried out by experienced teams with access to dedicated technical resources.

### ► DEMANDING CHOICES

KOHLER-SDMO is committed to designing high-performance generating sets which offer a demanding standard of quality. To ensure this, KOHLER-SDMO takes great care when selecting materials and equipment and works closely with suppliers who are also market leaders. KOHLER-SDMO and its partners are constantly working together to develop the solutions of the future.

### ► REDUCING POLLUTANT EMISSIONS

As part of its Power Products range, KOHLER-SDMO has decided to offer generating sets equipped with engines which limit pollutant emissions. To differentiate them, KOHLER-SDMO has added the suffix C3 = Stage 3A (50Hz/European directive).



## KOHLER-SDMO, OPTIMIZING THE PERFORMANCE OF YOUR INSTALLATIONS IN COMPLETE SAFETY

KOHLER-SDMO's Service department provides day-to-day support for distributors and customers, so as to guarantee the reliability and performance of its generating sets and energy production plants.

### ▶ TRAINING

The KOHLER-SDMO training center is based in Brest, and its purpose is to give our distributors and their customers the knowledge required for installing, commissioning, using and maintaining their generating sets.

### ▶ SPARE PARTS

While the hub of the spare parts management system is in Brest, KOHLER-SDMO draws on an international distribution network and dedicated specialist tools, ensuring it has the proximity to react promptly to customers' needs.

### ▶ TECHNICAL SUPPORT

After-sales service is able to respond to any technical questions encountered with a generating set from the moment it is installed. It organizes events on the ground and assists the distributors in their operations on a day-to-day basis.



# POWER PRODUCTS FROM 6KVA TO 44KVA

## KOHLER ENGINES

### OPEN VERSION



**K16U** OPEN VERSION



**K22** OPEN VERSION

### THREE-PHASE SPECIFICATIONS

SPECIFICATIONS 50 HZ - 400 - 230 V					SPECIFICATIONS 60 HZ - 480 - 277 V					GENERAL SPECIFICATIONS					
Generating sets <sup>(1)</sup>	rpm	kVA Cos 0.8		Cons 3/4 L/h	Generating sets <sup>(2)</sup>	rpm	kWe ISO 8528*		Cons 3/4 L/h	Engine			Open version <sup>(5)</sup>		
		PRP <sup>(3)</sup>	ESP <sup>(4)</sup>				PRP <sup>(3)</sup>	ESP <sup>(4)</sup>		Engine type	CC	CC (L)	Dimensions L x W x H (m)	Weight <sup>(6)</sup> (kg)	Tank (L)
K9	1500	8.1	9	1.9	K9U	1800	7.6	8.4	2.3	KDW1003	3L	1.0	1.22x0.70x0.92	290	50
K12	1500	10.9	12	2.5	K12U	1800	10.6	11.6	2.9	KDW1404	4L	1.4	1.41x0.72x1.02	340	50
K16	1500	15	16.5	3.7	K16U	1800	14.1	15.5	4.5	KDW1603	3L	1.7	1.41x0.72x1.02	410	50
K16H	3000	-	16	3.6	-	-	-	-	-	KDW1003-H	3L	1.0	1.41x0.72x1.02	310	50
K21H	3000	-	21	4.9	-	-	-	-	-	KDW1404-H	4L	1.4	1.41x0.72x1.02	350	50
K22	1500	19.5	21.5	3.3	K20U	1800	17.3	19	4.2	KDI1903M	3L	1.9	1.41x0.72x1.08	490	50
K27	1500	24.1	26.5	4.4	K25U	1800	22.6	24.8	5.6	KDI2504M	4L	2.5	1.41x0.72x1.08	540	50
K28H	3000	-	28	7.5	-	-	-	-	-	KDW1603-H	3L	1.7	1.70x0.90x1.12	500	100
K33	1500	30	33	5.7	K30U	1800	28	30.7	7.2	KDI2504TM-30	4L	2.5	1.70x0.90x1.12	500	100
K44	1500	40	44	7.1	K40U	1800	36	40	8.5	KDI2504TM-40	4L	2.5	1.70x0.90x1.12	500	100

### SINGLE-PHASE SPECIFICATIONS

SPECIFICATIONS 50 HZ - 230 V					SPECIFICATIONS 60 HZ - 240 V					GENERAL SPECIFICATIONS					
Generating sets <sup>(1)</sup>	rpm	kVA Cos 0.8		Cons 3/4 L/h	Generating sets <sup>(2)</sup>	rpm	kWe ISO 8528*		Cons 3/4 L/h	Engine			Open version <sup>(5)</sup>		
		PRP <sup>(3)</sup>	ESP <sup>(4)</sup>				PRP <sup>(3)</sup>	ESP <sup>(4)</sup>		Engine type	CC	CC (L)	Dimensions L x W x H (m)	Weight <sup>(6)</sup> (kg)	Tank (L)
K6M	1500	5.7	6.4	1.9	-	-	-	-	-	KDW1003	3L	1.0	1.22x0.70x0.92	290	50
-	-	-	-	-	K9UM	1800	7.3	8	2.3	KDW1003	3L	1.0	1.41x0.72x1.02	330	50
K10M	1500	8.2	9	2.5	K12UM	1800	10	11	2.9	KDW1404	4L	1.4	1.41x0.72x1.02	350	50
K12M	1500	10.7	11.8	3.7	K16UM	1800	12.2	14.5	4.5	KDW1603	3L	1.7	1.41x0.72x1.02	440	50
K17M	1500	14.1	15.5	3.3	K20UM	1800	16.4	18	4.2	KDI1903M	3L	1.8	1.41x0.72x1.08	530	50
K26M	1500	23.6	26	5.7	-	-	-	-	-	KDI2504TM-30	4L	2.5	1.70x0.90x1.25	690	100

(1) Also available in the following voltages: 415/240 V - 380/220 V - 220/127 V - 200/115 V

(2) Also available in the following voltages: 440/254 V - 220/127 - 208/120 V

(3) PRP: Main power available continuously with variable load for an unlimited time in accordance with ISO 8528-1.

(4) ESP: Standby power available for emergency use under variable load, in accordance with ISO 8528-1, no overload available under this service.

(5) The dimensions and weights apply to a generating set specified in the price list, without options

(6) Dry weight - without fuel

\*ISO 8528: power expressed in accordance with the legislation in force

▶ **POWER AND COMPACTNESS COMBINED**

The performance offered by KOHLER Diesel KDI engines ensures our generating sets boast a remarkable ratio of power to size. This means they can be made more compact, thereby reducing transport and storage costs. As an example, KOHLER-SDMO can now offer a 27KVA/25kWe generating set in a compact enclosure (M126). Thanks to the optimized combustion, both the fuel consumption and pollutant emissions levels are particularly low.

**SOUNDPROOFED VERSION**



**K9** ▶ SOUNDPROOFED VERSION



**K27** ▶ SOUNDPROOFED VERSION

**THREE-PHASE SPECIFICATIONS**

GENERATING SETS		STANDARD ENCLOSURE				ENCLOSURE WITH DOUBLE WALL BASE FRAME			SOUND LEVELS 50 HZ			SOUND LEVEL 60 HZ
50Hz	60Hz	Enclosure	Tank (L)	Dimensions L x W x H (m)	Weight (kg)	Fuel tank (L)	50 Hz (h) maximum run time	60 Hz (h) maximum run time	LWA	dB(A)@1m	dB(A)@7m	dB(A)@7m
K9	K9U	M125	50	1.48x0.76x1.03	390	-	-	-	83	67	54	64
K12	K12U	M126	50	1.75x0.78x1.23	510	93	36.8	31.7	83	67	54	64
K16	K16U	M126	50	1.75x0.78x1.23	580	93	25.1	20.7	91	74	61	69
K16H	-	M126	50	1.75x0.78x1.23	480	93	25.6	-	95	79	66	-
K21H	-	M126	50	1.75x0.78x1.23	520	93	19	-	96	80	67	-
K22	K20U	M126	50	1.75x0.78x1.23	660	93	26.6	22.5	88	71	58	67
K27	K25U	M126	50	1.75x0.78x1.23	710	93	19.8	16.7	93	76	64	68
K28H	-	M127	100	2.08x0.96x1.42	750	230	30.7	-	100	83	71	-
K33	K30U	M127	100	2.08x0.96x1.42	883	230	39	32	93	75	63	68
K44	K40U	M127	100	2.08x0.96x1.42	944	230	30.7	27	93	76	64	68

**SINGLE-PHASE SPECIFICATIONS**

GENERATING SETS		STANDARD ENCLOSURE				ENCLOSURE WITH DOUBLE WALL BASE FRAME			SOUND LEVELS 50 HZ			SOUND LEVEL 60 HZ
50Hz	60Hz	Enclosure	Tank (L)	Dimensions L x W x H (m)	Weight (kg)	Fuel tank (L)	50 Hz (h) maximum run time	60 Hz (h) maximum run time	LWA	dB(A)@1m	dB(A)@7m	dB(A)@7m
K6M	-	M125	50	1.48x0.76x1.03	390	-	-	-	83	67	54	-
-	K9UM	M126	50	1.75x0.78x1.23	500	93	-	40.4	-	-	-	64
K10M	K12UM	M126	50	1.75x0.78x1.23	520	93	36.8	31.7	83	67	54	64
K12M	K16UM	M126	50	1.75x0.78x1.23	610	93	25.1	20.7	91	74	61	69
K17M	K20UM	M126	50	1.75x0.78x1.23	700	93	26.6	22.7	87	71	58	67
K26M	-	M127	100	2.08x0.96x1.42	944	230	40.4	-	93	76	64	-

# POWER PRODUCTS FROM 9KVA TO 22KVA

## MITSUBISHI ENGINES

### OPEN VERSION



T12K OPEN VERSION



T16K OPEN VERSION

## THREE-PHASE SPECIFICATIONS

SPECIFICATIONS 50 Hz - 400 - 230 V					SPECIFICATIONS 480 Hz - 277 V					GENERAL SPECIFICATIONS					
Generating sets <sup>(1)</sup>	rpm	kVA Cos 0.8		Cons 3/4 L/h	Generating sets <sup>(2)</sup>	rpm	kWe ISO 8528*		Cons 3/4 L/h	Engine			Open version <sup>(5)</sup>		
		PRP <sup>(3)</sup>	ESP <sup>(4)</sup>				PRP <sup>(3)</sup>	ESP <sup>(4)</sup>		Engine type	CC	CC (L)	Dimensions L x W x H (m)	Weight <sup>(6)</sup> (kg)	Tank (L)
T9HK	3000	-	9	2.6	-	-	-	-	-	L2E-SDH	2L	0.6	1.22X0.70X0.92	240	50
T12K	1500	10.5	11.5	2.5	T11U	1800	10.2	11.2	3.2	S3L2-SD	3L	1.3	1.41X0.72X1.05	387	50
T12HK	3000	-	12	4.2	-	-	-	-	-	L3E-SDH	3L	1.0	1.22X0.70X0.92	260	50
T16K	1500	14.5	16	3.4	T16U	1800	14.6	16	4.2	S4L2-SD	4L	1.7	1.41X0.72X1.05	406	50
T22K	1500	20	22	4.7	T20U	1800	18.2	20	5.6	S4Q2-SD	4L	2.5	1.70X0.90X1.12	549	100

## SINGLE-PHASE SPECIFICATIONS

SPECIFICATIONS 50 Hz - 230 V					SPECIFICATIONS 60 Hz - 240 V					GENERAL SPECIFICATIONS					
Generating sets <sup>(1)</sup>	rpm	kVA Cos 0.8		Cons 3/4 L/h	Generating sets <sup>(2)</sup>	rpm	kWe ISO 8528*		Cons 3/4 L/h	Engine			Open version <sup>(5)</sup>		
		PRP <sup>(3)</sup>	ESP <sup>(4)</sup>				PRP <sup>(3)</sup>	ESP <sup>(4)</sup>		Engine type	CC	CC (L)	Dimensions L x W x H (m)	Weight <sup>(6)</sup> (kg)	Tank (L)
T8HKM	3000	-	7.5	2.6	-	-	-	-	-	L2E-SDH	2L	0.6	1.22x0.70x0.92	220	50
T9KM	1500	7.8	8.6	2.5	T11UM	1800	9.1	10	3.2	S3L2-SD	3L	1.3	1.41x0.72x1.05	396	50
T11HKM	3000	-	10.5	2.6	-	-	-	-	-	L3E-SDH	2L	1.0	1.22x0.70x0.92	280	50
T12KM	1500	10.9	12	3.4	T16UM	1800	13.6	15	4.2	S4L2-SD	4L	1.8	1.41x0.72x1.05	406	50
T17KM	1500	15.5	17	4.7	T20UM	1800	18.2	20	5.6	S4Q2-SD	4L	2.5	1.70x0.90x1.12	590	100

(1) Also available in the following voltages: 415/240 V - 380/220 V - 220/127 V - 200/115 V

(2) Also available in the following voltages: 440/254 V - 220/127 - 208/120 V

(3) PRP: Main power available continuously with variable load for an unlimited time in accordance with ISO 8528-1.

(4) ESP: Standby power available for emergency use under variable load, in accordance with ISO 8528-1, no overload available under this service.

(5) The dimensions and weights apply to a generating set specified in the price list, without options

(6) Dry weight - without fuel

\*ISO 8528: power expressed in accordance with the legislation in force



- ▶ KOHLER-SDMO offers an optional double wall base frame for high autonomy, With its double wall bund, the environment is protected against any possible fuel leak. It is the ideal option for use in isolated areas in particular.

## SOUNDPROOFED VERSION



**T9HK** ▶ SOUNDPROOFED VERSION



**T33K** ▶ SOUNDPROOFED VERSION

## THREE-PHASE SPECIFICATIONS

GENERATING SETS		STANDARD ENCLOSURE				ENCLOSURE WITH DOUBLE WALL BASE FRAME			SOUND LEVELS 50 HZ			SOUND LEVEL 60 HZ
50Hz	60Hz	Enclosure	Tank (L)	Dimensions L x W x H (m)	Weight (kg)	Fuel tank (L)	50 Hz (h) maximum run time	60 Hz (h) maximum run time	LWA	dB(A)@1m	dB(A)@7m	dB(A)@7m
<b>T9HK</b>	-	M125	50	1.48x0.76x1.03	360	93	35.8	-	83	67	54	-
<b>T12K</b>	<b>T11U</b>	M126	50	1.75x0.78x1.23	530	93	37.2	29.1	87	71	58	65
<b>T12HK</b>	-	M125	50	1.48x0.76x1.03	380	93	22.1	-	83	67	54	-
<b>T16K</b>	<b>T16U</b>	M126	50	1.75x0.78x1.23	554	93	27.4	22.1	89	72	59	65
<b>T22K</b>	<b>T20U</b>	M127	100	2.08x0.96x1.42	780	230	48.9	41.1	87	70	58	65

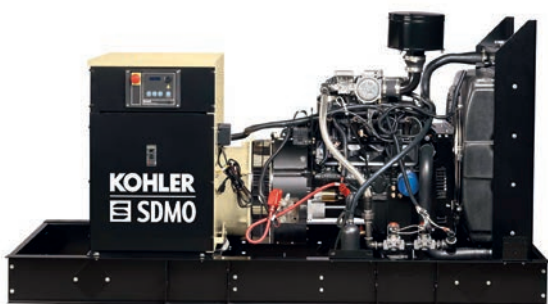
## SINGLE-PHASE SPECIFICATIONS

GENERATING SETS		STANDARD ENCLOSURE				ENCLOSURE WITH DOUBLE WALL BASE FRAME			SOUND LEVELS 50 HZ			SOUND LEVEL 60 HZ
50Hz	60Hz	Enclosure	Tank (L)	Dimensions L x W x H (m)	Weight (kg)	Fuel tank (L)	50 Hz (h) maximum run time	60 Hz (h) maximum run time	LWA	dB(A)@1m	dB(A)@7m	dB(A)@7m
<b>T8HKM</b>	-	M125	50	1.48x0.76x1.03	340	93	35.8	-	83	67	54	-
<b>T9KM</b>	<b>T11UM</b>	M126	50	1.75x0.78x1.23	544	93	37.2	29.1	87	71	58	63
<b>T11HKM</b>	-	M125	50	1.48x0.76x1.03	400	93	22.1	-	83	67	54	-
<b>T12KM</b>	<b>T16UM</b>	M126	50	1.75x0.78x1.23	630	93	27.4	22.1	88	72	59	65
<b>T17KM</b>	<b>T20UM</b>	M127	100	2.08x0.96x1.42	820	230	48.9	41.1	87	70	58	65

# POWER PRODUCTS FROM 25KVA TO 400KVA

KOHLER ENGINES | GAS FUEL

## OPEN VERSION



GZ25 OPEN VERSION



GZ200 OPEN VERSION

## THREE-PHASE SPECIFICATIONS

SPECIFICATIONS 50 HZ - 400 - 230 V				GENERAL SPECIFICATIONS				
Generating sets <sup>(1)</sup>	kVA Cos 0.8		rpm	Engine			Open version <sup>(5)</sup>	
	PRP <sup>(3)</sup>	ESP <sup>(4)</sup>		Engine type	CC	CC (L)	Dimensions L x W x H (m)	Weight <sup>(5)</sup> (kg)
GZ25	-	25	1500	GMC430-27	4L	3.0	2.20x1.04x1.20	592
GZ30	-	31	1500	GMC430-32	4L	3.0	2.20x1.04x1.20	615
GZ40	-	35	1500	GMC643-36	6V	4.3	2.20x1.04x1.17	666
GZ45	-	35	1500	GMC643-40	6V	4.3	2.20x1.04x1.17	708
GZ50	-	50	1500	GMC850	8V	5.3	2.20x1.04x1.17	786
GZ60	-	59	1500	GMC857	8V	5.7	2.20x1.04x1.17	786
GZ80	-	87	1500	GMC857T	8V	5.7	2.80x1.12x1.38	1271
GZ100	-	92	1500	GMC857TIC	8V	5.7	2.80x1.12x1.38	1271
GZ125	-	127	1500	PSI88T	8V	8.7	2.80x1.12x1.54	1293
GZ150	-	146	1500	PSI48TIC	8V	8.7	2.80x1.12x1.54	1554
GZ180	160	176	1500	D111TIC-176	6V	11.0	3.58x1.35x1.85	2238
GZ200	196	216	1500	D111TIC-195	6V	11.0	3.58x1.35x1.85	2238
GZ250	250	275	1500	D146TIC	8V	14.6	3.50x1.75x2.00	2942
GZ300	300	330	1500	D183TIC-273	10V	18.3	3.47x1.68x2.38	3623
GZ350	318	350	1500	D183TIC-319	10V	18.3	3.47x1.68x2.38	3623
GZ400	345	380	1500	D219TIC	12V	21.9	3.90x1.95x2.38	3888

(1) Only available in 400/230 V

(2) The dimensions and weights apply to a generating set specified in the price list, without options

(3) PRP: Main power available continuously under variable load for an unlimited number of hours annually, in accordance with ISO 8528-1

(4) ESP: Standby power available for emergency use under variable load, in accordance with ISO 8528-1, no overload available under this service.

(5) Dry weight - without fuel





▶ **THE GENERATING SET EQUIPPED WITH A DECISION-MAKER® 3000 UNIT**

Offers advanced control, a monitoring system and a diagnostic system for optimised performance.



**SOUNDPROOFED VERSION**



**GZ125** ▶ SOUNDPROOFED VERSION



**GZ60** ▶ SOUNDPROOFED VERSION

**THREE-PHASE SPECIFICATIONS**

GENERATING SETS	STANDARD ENCLOSURE			NATURAL GAS CONSUMPTION (M3/H)				SOUND LEVELS 50 HZ		
	Enclosure	Dimensions L x W x H (m)	Weight (kg)	110% load	100% load	75% load	50% load	LWA	dB(A)@1m	dB(A)@7m
<b>GZ25</b>	SSE25-60	2.59x1.08x1.51	841	8.8	8.2	6	4.3	96	76	64
<b>GZ30</b>	SSE25-60	2.59x1.08x1.51	905	10.2	9.5	8	5.6	96	76	64
<b>GZ40</b>	SSE25-60	2.59x1.08x1.51	957	13.5	12.5	10	7.5	93	73	62
<b>GZ45</b>	SSE25-60	2.59x1.08x1.51	1020	13.5	12.5	10	7.5	93	73	62
<b>GZ50</b>	SSE25-60	2.59x1.08x1.51	1100	17	16	13	10.3	92	73	62
<b>GZ60</b>	SSE25-60	2.59x1.08x1.51	1100	18.1	17.5	15	21	92	73	62
<b>GZ80</b>	SSE80-150	3.53x1.15x1.72	1518	29.7	28	23	18.5	92	75	64
<b>GZ100</b>	SSE80-150	3.53x1.15x1.72	1539	34.2	32	26	20.5	94	76	65
<b>GZ125</b>	SSE80-150	3.53x1.15x1.72	1732	35.6	33	26	20.5	100	81	70
<b>GZ150</b>	SSE80-150	3.53x1.15x1.72	1863	46.4	43	34	24.2	100	81	70
<b>GZ180</b>	SSE180-200	4.35x1.39x2.10	3064	48.3	43.6	34	23.7	99	79	68
<b>GZ200</b>	SSE180-200	4.35x1.39x2.10	3213	53.5	48.3	37	25.9	99	79	68
<b>GZ250</b>	SSE250	4.35x1.39x2.10	3711	70.4	36.8	49	34.2	95	75	64
<b>GZ300</b>	SSE300-350	6.31x2.23x2.86	5926	83.9	76.1	58	41.6	95	75	64
<b>GZ350</b>	SSE300-350	6.31x2.23x2.86	5926	88.1	79.9	60	46.8	96	75	64
<b>GZ400</b>	SSE400	7.23x2.49x2.86	6429	107.1	97	74	51.9	96	76	65

A simple modification to the control unit enables generating sets to be run on LPG.



# POWER PRODUCTS FROM 22KVA TO 250KVA

JOHN DEERE ENGINES

## OPEN VERSION



**J110K** OPEN VERSION  
with optional APM403 control unit



**J220K** OPEN VERSION  
with optional APM403 control unit

## THREE-PHASE SPECIFICATIONS

SPECIFICATIONS 50 HZ - 400 - 230 V					SPECIFICATIONS 60 HZ - 480 - 277 V					GENERAL SPECIFICATIONS					
Generating sets <sup>(1)</sup>	rpm	kVA Cos 0.8		Cons 3/4 L/h	Generating sets <sup>(2)</sup>	rpm	kWe ISO 8528 <sup>*</sup>		Cons 3/4 L/h	Engine			Open version <sup>(5)</sup>		
		PRP <sup>(3)</sup>	ESP <sup>(4)</sup>				PRP <sup>(3)</sup>	ESP <sup>(4)</sup>		Engine type	CC	CC (L)	Dimensions L x W x H (m)	Weight <sup>(6)</sup> (kg)	Tank (L)
J22	1500	20	22	3.8	J20U	1800	18.2	20	6.5	3029DFS29	3L	2.9	1.70x0.99x1.22	750	100
J22LR	1500	20	22	3.8	-	-	-	-	-	3029DFS29-LR	3L	2.9	1.70x0.99x1.22	750	100
J33	1500	30	33	4.9	J30U	1800	27.2	30	6.5	3029DFS29	3L	2.9	1.70x0.99x1.22	750	100
J44K	1500	40	44	7.5	J40U	1800	36	40	8.7	3029TFS29	3L	2.9	1.70x0.99x1.22	820	100
J66K	1500	60	66	12	J60U	1800	54	60	14.5	4045TF120	4L	4.5	1.87x0.99x1.36	995	180
J77K	1500	70	77	12	J70U	1800	64	70	14.5	4045TF120	4L	4.5	1.87x0.99x1.36	1128	180
J88K	1500	80	88	14	J80U	1800	73	80	16	4045TF220	4L	4.5	1.87x0.99x1.36	1088	180
J110K	1500	100	110	16.5	J100U	1800	91	100	19	4045HF120	4L	4.5	1.95x1.08x1.33	1187	190
J130K	1500	120	132	18.5	J120U	1800	106	117	24	6068TF220	6L	6.7	2.37x1.11x1.48	1498	340
J165K	1500	150	165	25	J150U	1800	137	150	29	6068HF120-153	6L	6.7	2.37x1.11x1.48	1578	340
J200K	1500	182	200	31.3	J175U	1800	159	175	36.1	6068HF120-183	6L	6.7	2.37x1.11x1.48	1730	340
-	-	-	-	-	J200U	1800	182	200	36.9	6068HF475	6L	6.7	2.40x1.11x1.48	1790	340
J220K	1500	200	220	35.1	-	-	-	-	-	6068HSG22	6L	6.7	2.37x1.11x1.54	1790	340
J250K	1500	227	250	35.9	-	-	-	-	-	6068HFS5-228	6L	6.7	2.40x1.11x1.54	1800	340

## SINGLE-PHASE SPECIFICATIONS

SPECIFICATIONS 50 HZ - 400 - 230 V					SPECIFICATIONS 60 HZ - 480 - 277 V					GENERAL SPECIFICATIONS					
Generating sets <sup>(1)</sup>	rpm	kVA Cos 0.8		Cons 3/4 L/h	Generating sets <sup>(2)</sup>	rpm	kWe ISO 8528 <sup>*</sup>		Cons 3/4 L/h	Engine			Open version <sup>(5)</sup>		
		PRP <sup>(3)</sup>	ESP <sup>(4)</sup>				PRP <sup>(3)</sup>	ESP <sup>(4)</sup>		Engine type	CC	CC (L)	Dimensions L x W x H (m)	Weight <sup>(6)</sup> (kg)	Tank (L)
-	-	-	-	-	J20UM	1800	18.2	20	6.5	3029DFS29	3L	2.9	1.70x0.90x1.22	750	100
-	-	-	-	-	J30UM	1800	25.5	28	6.5	3029DFS29	3L	2.9	1.70x0.90x1.22	800	100
-	-	-	-	-	J40UM	1800	36	40	8.7	3029TFS29	3L	2.9	1.70x0.90x1.22	786	100
-	-	-	-	-	J60UM	1800	55	60	14.5	4045TF120	4L	4.5	1.87x0.99x1.36	1187	190

(1) Also available in the following voltages: 415/240 V - 220/127 V - 200/115 V

(2) Also available in the following voltages: 440/254 V - 220/127 - 208/120 V

(3) PRP: Main power available continuously with variable load for an unlimited time in accordance with ISO 8528-1.

(4) ESP: Standby power available for emergency use under variable load, in accordance with ISO 8528-1, no overload available under this service.

(5) The dimensions and weights apply to a generating set specified in the price list, without options

(6) Dry weight - without fuel

\*ISO 8528: power expressed in accordance with the legislation in force



► **BASE FRAME WITH 48-HOUR TANK!**

For improved maximum run time, opt for the double wall base frame with a large capacity integrated fuel tank: ideal for isolated areas. This option combines the need for autonomy with security that ensures all the generating set's fluids will be retained.

**SOUNDPROOFED VERSION**



**J100U** ► SOUNDPROOFED VERSION  
with optional 48-hour tank



**J200K** ► SOUNDPROOFED VERSION

**THREE-PHASE SPECIFICATIONS**

GENERATING SETS		STANDARD ENCLOSURE				ENCLOSURE WITH DOUBLE WALL BASE FRAME			SOUND LEVELS 50 HZ			SOUND LEVEL 60 HZ
50Hz	60Hz	Enclosure	Tank (L)	Dimensions L x W x H (m)	Weight (kg)	Fuel tank (L)	50 Hz (h) maximum run time	60 Hz (h) maximum run time	LWA	dB(A)@1m	dB(A)@7m	dB(A)@7m
J22	J20U	M127	100	2.08X0.96X1.42	980	230	46	35.4	92	75	62	68
J22LR	-	M127	100	2.08X0.96X1.42	980	230	46	-	92	75	62	-
J33	J30U	M127	100	2.08X0.96X1.42	980	230	46	35.4	91	74	62	68
J44K	J40U	M127	100	2.08X0.96X1.42	1040	230	30.7	26.4	91	74	62	66
J66K	J60U	M128	180	2.30x1.06x1.68	1405	390	32.5	26.9	91	73	61	67
J77K	J70U	M128	180	2.30x1.06x1.68	1548	390	32.5	26.9	91	74	62	67
J88K	J80U	M128	180	2.30x1.06x1.68	1508	390	27.9	24.4	94	76	64	73
J110K	J100U	M129	190	2.55x1.15x1.68	1587	505	30.6	26.6	95	78	66	70
J130K	J120U	M226	340	3.51x1.20x1.83	2088	868	46.9	36.2	93	75	64	69
J165K	J150U	M226	340	3.51x1.20x1.83	2168	868	34.7	29.9	94	75	64	69
J200K	J175U	M226	340	3.51x1.20x1.83	2320	868	27.7	24.0	95	76	65	69
-	J200U	M226	340	3.51x1.20x1.83	2390	868	-	23.5	-	-	-	70
J220K	-	M226	340	3.51x1.20x1.83	2390	868	25.5	-	97	78	67	-
J250K	-	M226	340	3.51x1.20x1.83	2400	868	24.2	-	101	82	71	-

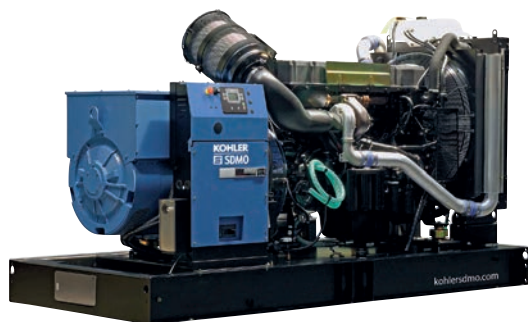
**SINGLE-PHASE SPECIFICATIONS**

GENERATING SETS		STANDARD ENCLOSURE				ENCLOSURE WITH DOUBLE WALL BASE FRAME		SOUND LEVEL 60 HZ
50Hz	60Hz	Enclosure	Tank (L)	Dimensions L x W x H (m)	Weight (kg)	Fuel tank (L)	60 Hz (h) maximum run time	dB(A)@7m
-	J20UM	M127	100	2.08X0.96X1.42	980	230	35.4	68
-	J30UM	M127	100	2.08X0.96X1.42	1020	230	35.4	68
-	J40UM	M127	100	2.08X0.96X1.42	1016	230	26.4	67
-	J60UM	M129	190	2.55x1.15x1.68	1577	390	26.9	67

# POWER PRODUCTS FROM 275KVA TO 700KVA

VOLVO ENGINES

## OPEN VERSION



V400C2 → OPEN VERSION

## SOUNDPROOFED VERSION



V275C2 → SOUNDPROOFED VERSION

## OPEN VERSION

## THREE-PHASE SPECIFICATIONS

SPECIFICATIONS 50 HZ - 400 - 230 V				SPECIFICATIONS 60 HZ - 480 - 277 V				GENERAL SPECIFICATIONS					
Generating sets <sup>(1)</sup>	kVA Cos 0.8		Cons 3/4 L/h	Generating sets <sup>(2)</sup>	kWe ISO 8528 <sup>*</sup>		Cons 3/4 L/h	Engine			Open version <sup>(5)</sup>		
	PRP <sup>(3)</sup>	ESP <sup>(4)</sup>			PRP <sup>(3)</sup>	ESP <sup>(4)</sup>		Engine type	CC	CC (L)	Dimensions L x W x H (m)	Weight <sup>(6)</sup> (kg)	Tank (L)
-	-	-	-	V250U	227	250	45.7	TAD734GE	6L	7.2	2.90X1.30X1.59	2260	390
V275C2	250	275	42.6	-	-	-	-	TAD734GE	6L	7.2	2.90X1.30X1.59	2200	390
V350C2	318	350	48	V300U	273	300	54	TAD1341GE	6L	12.8	3.16X1.34X1.76	3110	470
V400C2	352	387	58	V350U	319	350	69	TAD1342GE	6L	12.8	3.16X1.34X1.80	3060	470
V440C2	400	440	63.3	V400U	364	400	72.4	TAD1344GE	6L	12.8	3.16X1.34X1.80	3110	470
V500C2	455	500	69.2	-	-	-	-	TAD1345GE	6L	12.8	3.16X1.34X1.80	3250	470
V550C2	500	500	75.4	V500UC2	455	500	88.8	TAD1641GE	6L	16.1	3.47X1.50X2.05	3620	500
-	-	-	-	V550UC2	500	550	97.1	TAD1642GE	6L	16.1	3.47X1.63X2.09	3650	610
V650C2	591	650	85.2	-	-	-	-	TAD1642GE	6L	16.1	3.47X1.63X2.09	3780	610
V700C2	650	700	94.5	V600UC2	546	600	105.7	TWD1643GE	6L	16.1	3.47X1.63X2.05	4020	610

## SOUNDPROOFED VERSION

## THREE-PHASE SPECIFICATIONS

GENERATING SETS		STANDARD ENCLOSURE				ENCLOSURE WITH DOUBLE WALL BASE FRAME			SOUND LEVELS 50 HZ			SOUND LEVEL 60 HZ
50Hz	60Hz	Enclosure	Tank (L)	Dimensions L x W x H (m)	Weight (kg)	Fuel tank (L)	50 Hz (h) maximum run time	60 Hz (h) maximum run time	LWA	dB(A)@1m	dB(A)@7m	dB(A)@7m
-	V250U	M227	390	4.00X1.38X2.15	3190	950	-	20.8	-	-	-	74
V275C2	-	M227	390	4.00X1.38X2.15	3130	950	22.3	-	97	78	67	-
V350C2	V300U	M228	470	4.48X1.41X2.43	4042	1368	28.5	25.3	97**	81	71	76
V400C2	V350U	M228	470	4.48X1.41X2.43	4170	1368	23.6	19.8	97**	81	71	76
V440C2	V400U	M228	470	4.48X1.41X2.43	4080	1368	21.6	18.9	98**	81	71	76
V500C2	-	M228	470	4.48X1.41X2.43	4360	1368	19.8	-	98**	81	71	-
V550C2	V500UC2	M229	500	5.03X1.56X2.44	4870	1770	23.5	19.9	97	76	66	75
-	V550UC2	M230	610	5.03X1.69X2.66	5170	1950	-	20.1	-	-	-	75
V650C2	-	M230	610	5.03X1.69X2.66	5300	1950	22.9	-	100	80	70	-
V700C2	V600UC2	M230	610	5.03X1.69X2.66	5550	1950	20.6	18.4	105	85	75	79

(1) Also available in the following voltages: 415/240 V - 380/220 V - 220/127 V - 200/115 V

(2) Also available in the following voltages: 440/254 V - 220/127 - 208/120 V

(3) PRP: Main power available continuously with variable load for an unlimited time in accordance with ISO 8528-1.

(4) ESP: Standby power available for emergency use under variable load, in accordance with ISO 8528-1, no overload available under this service.

(5) The dimensions and weights apply to a generating set specified in the price list, without options

(6) Dry weight - without fuel

\*ISO 8528: power expressed in accordance with the legislation in force

\*\* with CN09 option



## POWER PRODUCTS FROM 275KVA TO 830KVA

DOOSAN ENGINES

### OPEN VERSION



D440 OPEN VERSION

### SOUNDPROOFED VERSION



D600U SOUNDPROOFED VERSION

### OPEN VERSION

### THREE-PHASE SPECIFICATIONS

SPECIFICATIONS 50 HZ - 400 - 230 V				SPECIFICATIONS 60 HZ - 480 - 277 V				GENERAL SPECIFICATIONS					
Generating sets <sup>(1)</sup>	kVA Cos 0.8		Cons 3/4 L/h	Generating sets <sup>(2)</sup>	kWe ISO 8528 <sup>*</sup>		Cons 3/4 L/h	Engine			Open version <sup>(5)</sup>		
	PRP <sup>(3)</sup>	ESP <sup>(4)</sup>			PRP <sup>(3)</sup>	ESP <sup>(4)</sup>		Engine type	CC	CC (L)	Dimensions L x W x H (m)	Weight <sup>(6)</sup> (kg)	Tank (L)
D275	250	275	43.6	-	-	-	-	P126TI	6	11.1	2.90x1.30x1.67	2340	390
D300	273	300	43.6	D250U	227	250	52.3	P126TI	6	11.1	2.90x1.30x1.67	2410	390
D330	300	330	47.0	D300U	273	300	56	P126TI-II	6	11.1	3.16x1.34x1.59	2570	470
D440	400	440	65.1	D400U	364	400	74.7	P158LE	8	14.6	3.47x1.50x1.83	2910	500
D550	500	550	83.4	D500U	449	494	92.9	DP158LD	8	14.6	3.47x1.50x1.82	3220	500
D630	573	630	94.2	D550U	500	550	106.6	DP180LA	10	18.3	3.47x1.63x1.97	3465	610
D700	631	694	103.8	D600U	545	600	112	DP180LB	10	18.3	3.47x1.63x2.16	3700	610
D830	750	825	119.1	D750U	682	750	134.4	DP222LC	12	21.9	3.47x1.63x2.18	4080	610

### SOUNDPROOFED VERSION

### THREE-PHASE SPECIFICATIONS

GENERATING SETS		STANDARD ENCLOSURE				ENCLOSURE WITH DOUBLE WALL BASE FRAME			SOUND LEVELS 50 HZ			SOUND LEVEL 60 HZ
50Hz	60Hz	Enclosure	Tank (L)	Dimensions L x W x H (m)	Weight (kg)	Fuel tank (L)	50 Hz (h) maximum run time	60 Hz (h) maximum run time	LWA	dB(A)@1m	dB(A)@7m	dB(A)@7m
D275	-	M227	390	4.00x1.38x2.15	3190	950	21.8	-	102	83	73	-
D300	D250U	M227	390	4.00x1.38x2.15	3260	950	21.8	18.2	102	83	73	78
D330	D300U	M228	470	4.48x1.41x2.43	3670	1368	29.1	24.4	101	81	71	75
D440	D400U	M229	500	5.03x1.56x2.44	4090	1770	27.2	23.7	105	85	75	79
D550	D500U	M229	500	5.03x1.56x2.44	4262	1770	21.2	19	104	84	74	80
D630	D550U	M230	610	5.03x1.69x2.66	5146	1950	20.7	18.3	108	88	78	82
D700	D600U	M230	610	5.03x1.69x2.66	5381	1950	18.8	17	108	88	78	82
D830	D750U	M230	610	5.03x1.69x2.66	5670	1950	16.4	14.5	108	88	78	78

(1) Also available in the following voltages: 415/240 V - 380/220 V - 220/127 V - 200/115 V

(2) Also available in the following voltages: 440/254 V - 220/127 - 208/120 V

(3) PRP: Main power available continuously under variable load for an unlimited number of hours annually, in accordance with ISO 8528-1.

(4) ESP: Standby power available for emergency use under variable load, in accordance with ISO 8528-1, no overload available under this service.

(5) The dimensions and weights apply to a generating set specified in the price list, without options

(6) Dry weight - without fuel

\*ISO 8528: power expressed in accordance with the legislation in force

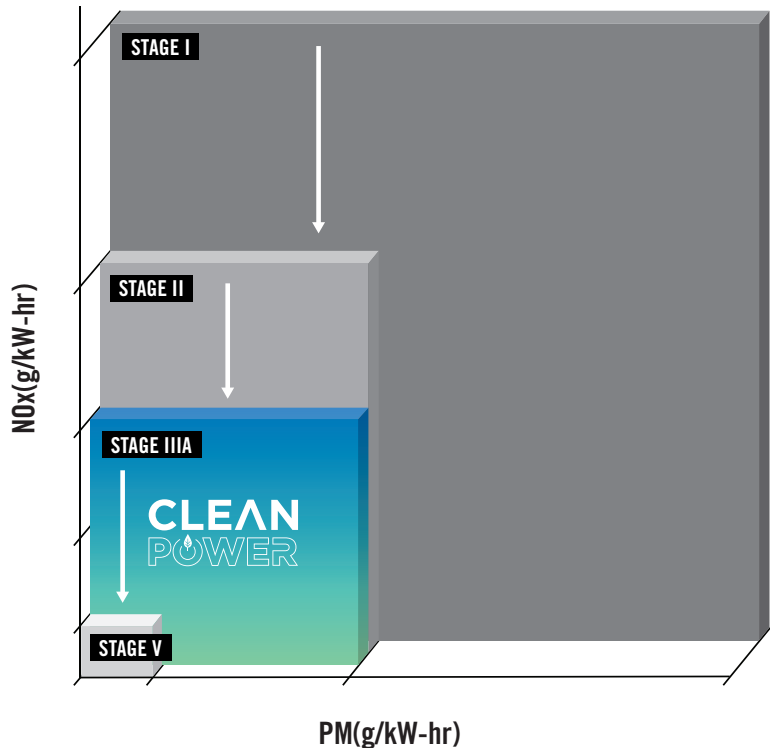
THE ENVIRONMENTALLY RESPONSIBLE CHOICE

## REDUCE THE POLLUTANT EMISSIONS, KEEP THE POWER

KOHLER-SDMO offers a Clean Power range of 10 generating sets equipped with STAGE IIIA engines

Want to reduce the environmental impact of your business activity for power ratings from 22 to 550 kVA? Now you can, thanks to the CLEAN POWER range equipped with STAGE IIIA certified engines with low pollutant emissions. By offering this option for installed stationary generating sets, KOHLER-SDMO exceeds the European legislation that stipulates this for single mobile generating sets.

GENSET OUTPUT	STAGE IIIA EMISSIONS STANDARDS
from 20 to 41 kVA	7.5 NO <sub>x</sub> (g/kw-hr)/0.6 PM (g/kw-hr)
from 41 to 84 kVA	4.7 NO <sub>x</sub> (g/kw-hr)/0.4 PM (g/kw-hr)
from 84 to 146 kVA	4.0 NO <sub>x</sub> (g/kw-hr)/0.4 PM (g/kw-hr)
from 146 to 630 kVA	4.0 NO <sub>x</sub> (g/kw-hr)/0.2 PM (g/kw-hr)





## OPEN VERSION



**K44C3** → OPEN VERSION

## SOUNDPROOFED VERSION



**V350C3** → SOUNDPROOFED VERSION

SPECIFICATIONS 50 HZ - 400 - 230 V				GENERAL SPECIFICATIONS						STANDARD ENCLOSURES				SOUND LEVELS 50 HZ		
Generating sets <sup>(1)</sup>	kVA Cos 0.8		Cons 3/4 L/h	Engine			Open version <sup>(4)</sup>			Enclosures	Fuel tank (L)	Dimensions L x W x H (m)	Weight (kg)	LWA	dB(A)@1m	dB(A)@7m
	PRP <sup>(2)</sup>	ESP <sup>(3)</sup>		Engine type	CC	CC (L)	Dimensions L x W x H (m)	Weight <sup>(5)</sup> (kg)	Tank (L)							
K22C3	19.5	21.5	3.3	KDI1903M	1.86	3	1.41x0.72x1.08	490	50	M126	50	1.75x0.78x1.39	800	88	71	58
K33C3	30	33	5.7	KDI2504TM-30-EU	2.48	3	1.70x0.90x1.12	629	100	M127	100	2.08x0.96x1.42	883	93	75	63
K44C3	40	40	7.3	KDI2504TM-40-EU	2.48	4	1.70x0.90x1.12	690	100	M127	100	2.08x0.96x1.42	944	93	76	64
K66C3	60	66	12.4	KDI3404TM	3.4	4	1.87x0.99x1.36	995	180	M128	180	2.30x1.06x1.68	1405	94	76	64
J110C3	100	110	19.6	4045HFS87	4.48	4	1.95x1.08x1.33	1187	190	M129	190	2.55x1.15x1.68	1587	97	79	67
J165C3	150	165	24.5	6068HFS85-IND	6.72	6	2.37x1.11x1.48	1578	340	M226	340	3.51x1.20x1.83	2168	95	77	66
J220C3	200	220	37.6	6068HFS86-IND	6.72	6	2.40x1.11x1.48	1811	340	M226	340	3.51x1.20x1.83	2471	96	78	67
V350C3	318	350	51.5	TAD1351GE	12.78	6	3.16x1.34x1.80	3103	470	M228	470	4.48x1.41x2.43	4035	97	77	66
V440C3	400	440	66.7	TAD1355GE	12.78	6	3.16x1.34x1.80	3110	470	M228	470	4.48x1.41x2.43	4080	98	78	68
V550C3	500	550	79.8	TAD1651GE	16.12	6	3.47x1.63x2.10	3620	610	M230	610	5.03x1.69x2.66	4400	100	80	70

POLLUTANT EMISSIONS				
Generating sets <sup>(1)</sup>	PM (g/kW.h)	CO (g/kW.h)	HC+Nox (g/kW.h)	HC (g/kW.h)
K22C3	0.20	2.38	6.71	-
K33C3	0.28	1.08	5.42	-
K44C3	0.28	1.08	5.42	-
K66C3	0.23	0.62	4.16	0.23
J110C3	0.17	1.29	3.54	0.15
J165C3	0.10	1.15	3.68	0.13
J220C3	0.10	1.15	3.68	0.13
V350C3	0.14	0.90	3.71	0.15
V440C3	0.14	0.93	3.61	0.10
V550C3	0.14	0.77	3.63	0.14

(1) Also available in the following voltages: 415/240 V - 380/220 V - 220/127 V - 200/115 V

(2) PRP: Main power available continuously under variable load for an unlimited number of hours annually, in accordance with ISO 8528-1.

(3) ESP: Standby power available for emergency use under variable load, in accordance with ISO 8528-1, no overload available under this service.

(4) The dimensions and weights apply to a generating set specified in the price list, without options

(5) Dry weight - without fuel

# OPTIONS

## MODULAR GENERATING SETS, AN ADAPTED RESPONSE

For each of its generating sets, KOHLER-SDMO offers a large range of options to facilitate maintenance operations, enhance user safety and provide solutions for specific use requirements or unusual environments.

### OPTION SPECIFICATIONS BY RANGE



	ADRIATIC	PACIFIC	NEVADA	MONTANA	ATLANTIC	OCEANIC
Protection of hot parts	CEL02	CEL02	CEL05	CEL02	CEL02	CEL02
Diesel separator pre-filter	FD05	FD05	X	FD05 <sup>(7)</sup>	•	FD05
Battery isolating switch	EN16	EN16	X	EN16	EN16	EN16
Automatic pack	CA303/CM403	CA303/CM403	EN28	CA303/CM403	CM403/CM404	CM404
Electronic control	EN01	EN01	•	EN01	•	•
Automatic filling kit	FD08 <sup>(1)</sup>	FD08 <sup>(1)</sup>	X	FD08 <sup>(1)</sup>	FD08 <sup>(1)</sup>	FD08 <sup>(1)</sup>
Drainage pump	EN04	EN04	X	EN04	•	EN04
Analog measurements display	CA307/CM407	CA307/CM407	•	CA307/CM407	•	•
Oversized alternator	X	A0001B <sup>(2)</sup>	X	A0001B <sup>(3)</sup>	A0001B <sup>(4)</sup>	A0001B <sup>(5)</sup>
Air discharge duct	CN03	CN03	X	CN03	CN03	CN03
9dB(A) silencer in open version	• <sup>(6)</sup>	• <sup>(6)</sup>	X	• <sup>(6)</sup>	• <sup>(6)</sup>	• <sup>(6)</sup>
High run time, double wall base frame	FD02*	FD02*	X	FD02	FD02	FD02
Base frame with 48-hour tank	X	X	X	FD03	X	X
40dB(A) silencer	EN09	EN09	•	EN09	EN09	EN09

• Standard  
CEL02: option code  
X Not available  
\* for all generating sets except for M125 enclosures

(1) Not possible on 48-hour and double wall base frame  
(2) Option not available for 3000 rpm and T30UM, T40U, T40UM and T44K generating sets  
(3) Option not available for J20UM, J30UM, J40U, J44K, J70U, J80U and J88K generating sets and on the enclosed version of the J220C2 set  
(4) Option not available on the covered versions of V600UC2 and V700C2 gensets

(5) Option not available for the D700 and on the enclosed versions of the D500U, D550 and D600U sets  
(6) 29 dB(A) and 40 dB(A) silencer available as an option  
(7) Standard on the J220K

#### ▶ ANALOG VALUE DISPLAYS (CA307/CM407)

This option displays the oil pressure and water temperature on the APM303 or APM403 screen. In some cases, this is on an additional display.



#### ▶ AIR DISCHARGE DUCT (EN12/EN08/EN09)

Metal elbow-shaped box section which enables the air to be discharged from the top of the enclosure towards the front of the generating set.



#### ▶ BATTERY ISOLATING SWITCH (EN16)

Battery isolating switch via a rotating handle allowing the battery to be easily isolated when the genset is being stored.



## 1 PROTECTION FOR HOT PARTS (CEL02)

Protection grille for hot parts (exhaust manifold) on diesel engines and rotating parts. This option guarantees user safety during maintenance operations. Mandatory option within the European community (European directive).

## 2 OVERSIZED ALTERNATOR (A0001B)

For use under heavy electrical or climate constraints, this option allows greater operating flexibility for a better guarantee of performance.

## 3 DRAINAGE PUMP (EN04-EN05)

Manual oil drainage pump for easier servicing of the generating set during maintenance operations. Standard option on enclosed gensets.

## 4 SILENCER ON OPEN VERSION

To meet installation requirements, a choice of three attenuation levels (9dB(A), 29dB(A), 40dB(A)), is available for "open" version gensets.

## AUTOMATIC PACK (EN20)

This includes a preheating resistor and a battery charger. It comprises an engine preheating device that uses an electric heater. Preheating is self-adjusting up to 200 kVA and thermostatically controlled for power values above this. This option is ideal for a genset used for backup operation. It allows the coolant to be maintained at a temperature of 40°C to facilitate emergency starting and save time when starting up the genset.

## 5 DIESEL SEPARATOR PRE-FILTER (FD05)

This pre-filter removes contaminating water from the diesel, thereby improving the engine's protection.

## 6 FILTER WITH INTERCHANGEABLE CARTRIDGE (EN02)

Dry air filters with removable and interchangeable cartridges for dusty environments that can be removed and cleaned by blowing.

This option is required when the generating set is used in dusty environments.

## 7 AUTOMATIC FILLING KIT (FD08)

This is an automatic kit for filling the tank from an external storage tank. It includes:  
- An electric pump with automatic control governed by a gauge with level contacts  
- A manual back-up pump

Extended use possible without having to top up the diesel. It is particularly well suited for use in isolated areas.

## ELECTRONIC GOVERNOR (EN01)

Electronic type speed regulator with control unit guaranteeing accurate speed regulation for a frequency of: +/- 1 %. This regulator is factory fitted on certain engines. This option allows the quality of the signal to be improved for better operation of sensitive equipment.

1 ▶



2 ▶



3 ▶



4 ▶



5 ▶



6 ▶



7 ▶





# CONTROL UNITS

## DEC3000, APM303\*, APM403\*, APM802\*: KOHLER-SDMO EXCLUSIVE

### KOHLER-SDMO offers a unique range of specific control units:

DEC3000, APM303, APM403 and APM802. These control units offer a wide range of possibilities, from simplified running to the option of managing the most complex synchronising operations, and can be adapted to suit every need.

POWER PRODUCTS	DEC3000	APM303	APM403	APM802
ADRIATIC RANGE	X	•	X	X
PACIFIC I RANGE	X	•	X	X
NEVADA RANGE	•	X	X	X
MONTANA RANGE	X	•	0*	X
ATLANTIC	X	X	•	0
OCEANIC	X	X	•	0
PACIFIC II	X	X	•	0
KD SERIES	X	X	•	0

• Standard X Not available 0 Optional \* from 77 kVA (J77)

### COMPARISON OF THE 3 CONTROL UNITS

SPECIFICATIONS	APM303	APM403	APM802
<b>DISPLAY</b>			
Frequency	•	•	•
Phase to neutral voltages	•	•	•
Phase to phase voltages	•	•	•
Currents	•	•	•
Active/reactive/apparent power	•	•	•
Power factor	•	•	•
Grid detection	X	•*	•
Battery voltage:	•	•	•
Battery current	X	0	0
Start-up delay	•	•	•
Fuel level	•	•	•
Oil pressure	•	•	•
Coolant temperature	•	•	•
Oil temperature	X	0	0
Total working hours counter	•	•	•
Partial working hours counter	X	•	•
Total active/reactive energy meter	•	•	•
Genset speed	•	•	•
<b>FAULT INFORMATION (fault or alarm)</b>			
Min/max alternator voltage	•	•	•
Min/max alternator frequency	•	•	•
Min/max battery voltage	•	•	•
Overload and/or short circuit	•	•	•
Active/reactive power return	X	•*	•
Oil pressure	•	•	•
Coolant temperature	•	•	•
Speed too high	•	•	•
Speed too low	•	•	•
Low fuel level	•	•	•
Emergency stop fault	•	•	•
Non-starting fault	•	•	•
Charging alternator fault	•	•	•
Differential relay activation fault	0	•	•
General alarm	•	•	•
General fault	•	•	•
Sound alarm	0	0	•
Fully compatible with SAE J1939	X	•	•

SPECIFICATIONS	APM303	APM403	APM802
<b>OPERATION</b>			
Power ON	0	•	X
Manual genset starting	•	•	•
Automatic genset starting	•	•	•
Genset shut down	•	•	•
Emergency stop	•	•	•
Menu navigation using color touch-screen	X	X	•
Navigation in menu using button	•	•	X
Speed adjustment	0	0** / •*	•
Voltage adjustment	0	0** / •*	•
Controller redundancy	X	X	0
Dual frequency	X	•	0
Delayed start programming	X	•	0
Multilingual using pictograms	•	X	X
Multilingual text	X	•	•
<b>CONNECTIVITY</b>			
MODBUS TCP/IP	X	0	•
RS485 (MODBUS RTU protocol)	•	•	•
SNMP protocol	X	0	X
Local WEB access	X	0	X
Remote WEB access	X	0	X
USB port (config and software downloading)	•	•	•
Remote control HMI	X	X	0
<b>COUPLING</b>			
Off	X	X	•
Under load	X	•*	•
Power plant continuity in case of inter controller communication fault	X	•*	•
Power plant wattmeter control: "Start/stop several gensets based on the power demand per installation"	X	•*	•
Temporary coupling of Out/Return grid	X	•*	•
Power plant coupling to grid (temporary, permanent, etc.)	X	X	•
<b>GENERAL</b>			
Downloading of a customized configuration via USB port	•	•	•
Downloading of the firmware configuration + existing configuration via USB port	•	•	•

• Standard X Not available 0 Optional \* APM403P \*\* APM403S

\* Advanced Power Management

## CONTROL UNITS

# APM303, THE ESSENTIALS MADE SIMPLE

The APM303 is a versatile unit equipped with a particularly intuitive LCD screen. It offers high-quality basic functions, allowing easy and reliable operation of your generating set. This unit is mounted on a console on all generating sets designed for LV industrial applications with and without a source transfer switch.

### ▶ RS485 SUPERVISION

MODBUS RTU supervision is available as standard via an RS485 link. This link can be configured for the customer's installation.

PRODUCT PLUS



## FUNCTIONS

- Manual and automatic mode (with auto start input)
- Generating set protection and management
- Electrical measurements, including power (option)
- Mechanical value measurements (option)
- Automatic voltage and frequency detection
- Secure configuration on the APM303 or on PC

## CONNECTIVITY

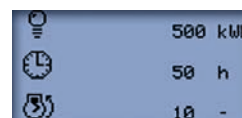
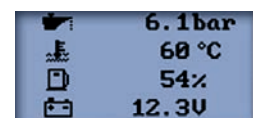
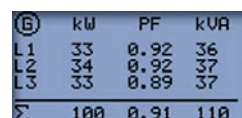
- 2 configurable reports
- MODBUS RTU RS485
- USB port

## OPERATION CONDITIONS

- IP54 front on the controller
- Tropicalised varnish protect against humidity and dust

## MEASUREMENTS

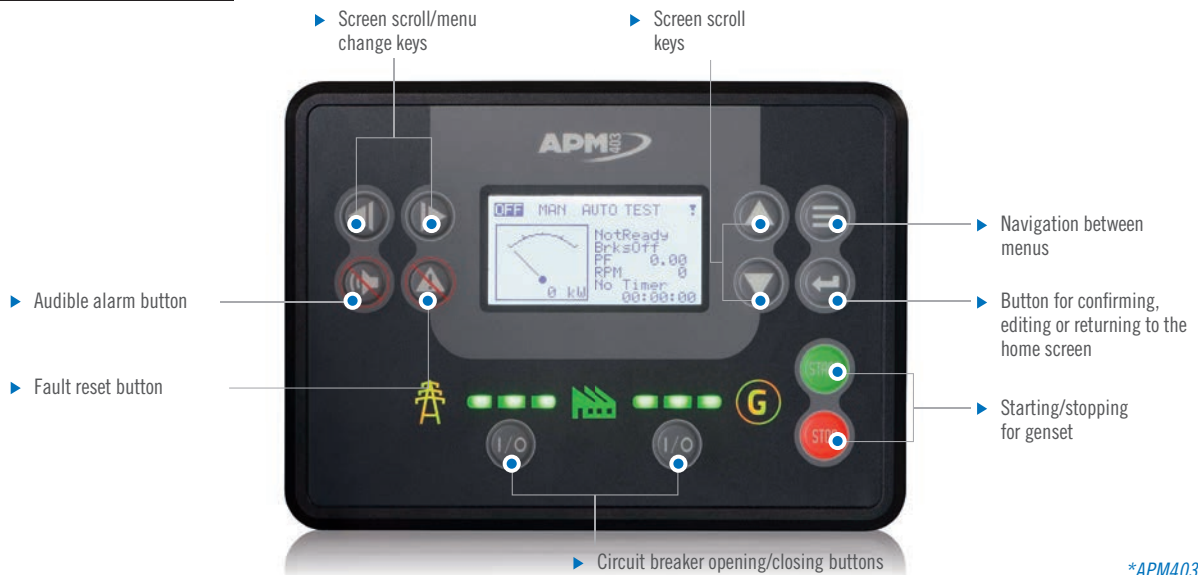
LCD display examples



## CONTROL UNITS

# APM403, INTUITIVE, SIMPLE AND CONNECTED

### APM403 PRESENTATION\*



### ADVANTAGES OF THE APM403

#### FLEXIBLE CONFIGURATION

- ▶ Technical solution can be broken down for multi-configuration – SOLO or PARALLELING applications (up to 8 generating sets)
- ▶ Specific application variables can be customized.

#### FLEXIBLE COMMUNICATION TOOLS

- ▶ Remote configuration and supervision thanks to the **WEBSUPERVISOR** application (option)
- ▶ Standard communication tools:
  - CAN USB Host, USB device, RS485
  - SNMP, MODBUS protocol
- ▶ Optional:
  - 4G, Ethernet, GPRS, Airgate
  - TCP/IP protocol

#### FOCUS

### ▶ APM403S



The APM403S is dedicated to SOLO operation only. No grid electrical measurements or associated circuit breaker control.

#### INTUITIVE NAVIGATION AND SIMPLIFIED GENSET OR POWER PLANT OPERATION

- ▶ Multilingual support
- ▶ Simple, intuitive configuration specific to operating scenarios



## CONTROL UNITS

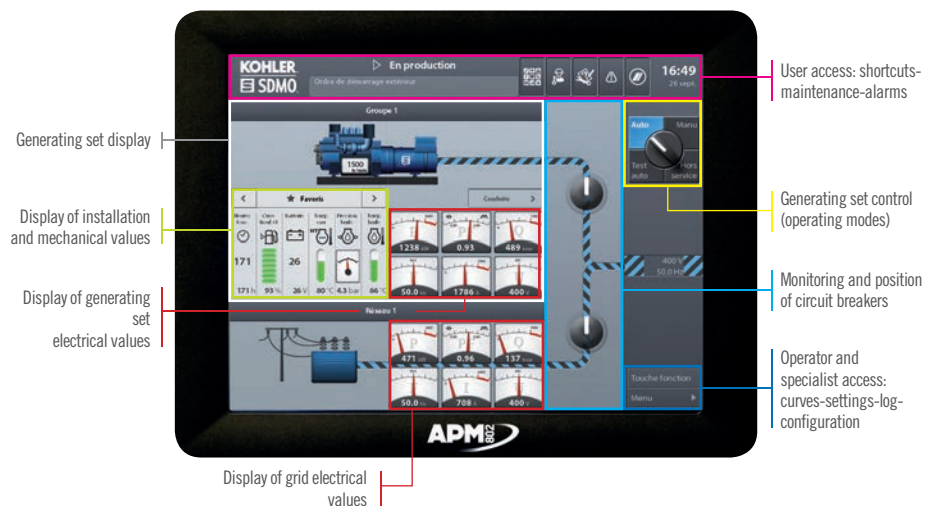
# APM802, DEDICATED TO POWER PLANT MANAGEMENT

Fully developed by KOHLER-SDMO, the new APM802 command/control system is specifically designed for operating and monitoring power plants for markets including hospitals, data centers, banks, the oil and gas sector, industries, IPP, rental, mining, etc. The Human Machine Interface, designed in collaboration with a company specializing in interface design, facilitates operations via its large 100% touch screen. The pre-configured system for power plant applications features a brand new customization function which complies with international standard IEC 61131-3.

### ▶ INTUITIVE AND ERGONOMIC TO USE

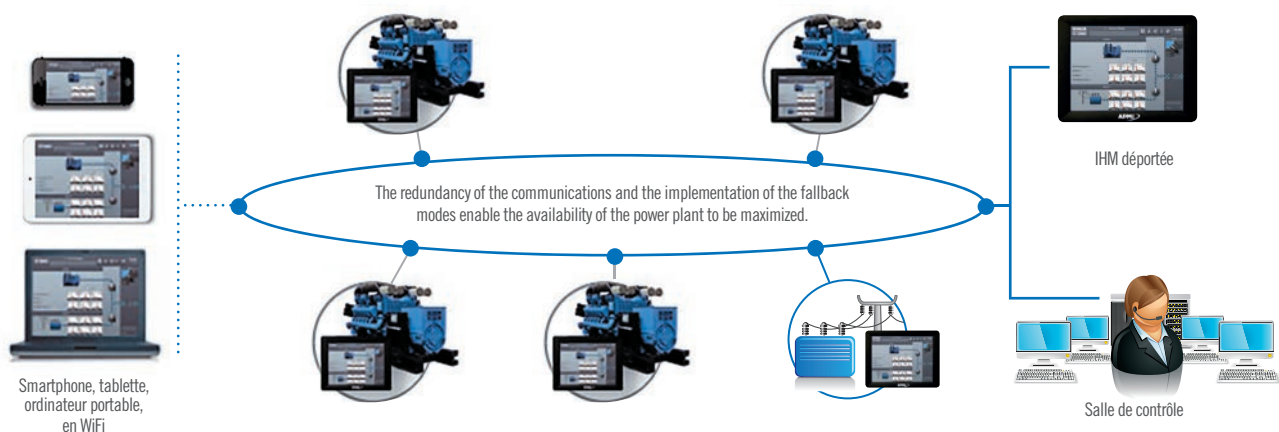
The ergonomics of the APM802 have been carefully designed in conjunction with users to ensure optimum user comfort. The operator is guided through operation of the product according to their access level, making it easy to get started and reducing the risk of errors.

PRODUCT  
PLUS



## THE APM802 FOR ENHANCED COMMUNICATIONS

Communication via the APM802 guarantees a high level of equipment availability and facilitates remote control of the HMI for enhanced usage. Additionally, connections can be made via Ethernet, using fibre optics or combined with electrical wiring. For full control of risk management, the system communications are separate from the external communications.



The ring is created by several Ethernet segments and groups together regulation and PLC communications.

The APM802 can be integrated into a console, into a built-in control unit, directly on the generating set, or in a separate cabinet, to adapt to all installation constraints. An assurance of innovation, the APM802 is protected by copyrights and two patents.

# POWER MODULES

## CONTROL CONSOLES, AIPR, VERSO

### THE CONTROL CONSOLES



Up to 630A, the power modules are integrated into the consoles. The extra-flexible cables between the console and the alternator are fitted in a corrugated insulating sleeve.

### POWER MODULE SPECIFICATIONS

POWER OUTPUT	2 POLES	3 POLES	4 POLES
Modular circuit breaker from 10A to 125A	• <sup>(2)</sup>	X <sup>(1)</sup>	•
Fixed unit circuit breaker 160A to 630A	X	•	0

(1) As standard for some neutral connections  
 (2) Only for single-phase generating sets  
 • Standard X Not available 0 Optional

### AIPR



Above 630A, power modules called AIPRs are separated from the control/command. These control boxes are fitted on the generating set base frame and connected to the alternator.

AIPR3	
With manual control on the front panel	
3-pole open circuit breaker	•
4-pole open circuit breaker	0
Motorized control option*	
With 3-pole circuit breaker, open type	0
With 4-pole circuit breaker, open type	0
Other specifications	
Voltage 208V-440V	•
Power connection bus bars	•
Protection index	IP23
Dimensions	
Dimensions (h x l x d) in mm	1020 x 560 x 238

\* The motorized control comprises: a closing electromagnet, a transmitting coil and an AC motor  
 • Standard 0 Optional

### VERSO

In industrial applications, the transfer of the main source to the replacement source is crucial for the running of your installations. The Verso is ideal for meeting this demand: **from 35 to 160A, the Verso 100 and 150D, and from 200A to 3200A, the Verso 200.**

VERSO 100	VERSO S Single phase				VERSO S Three phase					VERSO D				
Ratings (A)	63	100	125	160	35	63	100	125	160	35	63	100	125	160
Type	Single phase				Three phase					Three phase				
Nominal voltage/frequency	230V / 50-60Hz				127 / 230 V / 50-60Hz _ 230 / 400 V / 50-60Hz					127 / 230 V / 50-60Hz _ 230 / 400 V / 50-60Hz				
Display and setting	Potentiometer				Potentiometer					Via LCD display				
Voltage drop tolerated	20% of the nominal voltage @230V				20% of the nominal voltage @400V					30% of the nominal voltage @400V				
Voltage range tolerated					176 - 288V					160 - 305V				
Protects against a change in the phase rotation direction	X				•					•				
Protection in "0" position	X				X					Rapid automatic protection available for D versions				
Lightning arrester	X				X					0				
Confirmation of mains return	•				•					•				
FOR FRANCE ONLY	•				•					•				
Protection index	IP54				IP31					IP54				
Dimensions (h x l x d) in mm	410 X 305 x 150				385 x 385 x 193					600 x 400 x 200				

VERSO 150D			
Ratings (A)	63	100	160
Type	Three phase		
Nominal voltage/frequency	230/400V 50Hz		
Display and setting	Potentiometer		
Voltage drop tolerated	30% of the nominal voltage 400V		
Voltage range tolerated	320/480Vac between phases	-	
Protects against a change in the phase rotation direction	•		
Protection in "0" position	•		
Lightning arrester	0		
EJP pack (for France only)	X		
Confirmation of mains return	X		
Protection index	IP55		
Dimensions (h x l x d) in mm	400 x 400 x 200	600 x 500 x 200	

VERSO 200				
Ratings (A)	200, 250, 400, 630		800, 1000, 1250, 1600*	2000, 2500, 3200
Type	Three phase			
Nominal voltage/frequency	127 / 230 V / 50-60HZ _ 230 / 400 V / 50-60HZ			
Configuration	Auto-configuration of voltage/frequency min/max and configurable thresholds			
Display and setting	By LCD - Supplied with manually-operated key - Can be padlocked in manual mode			
Voltage drop tolerated	30% of the nominal voltage @ 400 V			
Protects against a change in the phase rotation direction	0			
Lightning arrester	0			
EJP pack (for France only)	•			
Confirmation of mains return	0			
Protection index	IP20 (55 on request)	IP55		IP55
Inputs/outputs	3 configurable dry contact inputs/2 configurable relay outputs			
Dimensions (h x l x d) in mm	805 x 620 x 485 mm IP55: 1600 x 606 x 442 mm	2000 x 806 x 642 mm *1600A: 2000 x 1006 x 642 mm		2000 x 806 x 542 mm

• Standard X Not available 0 Optional

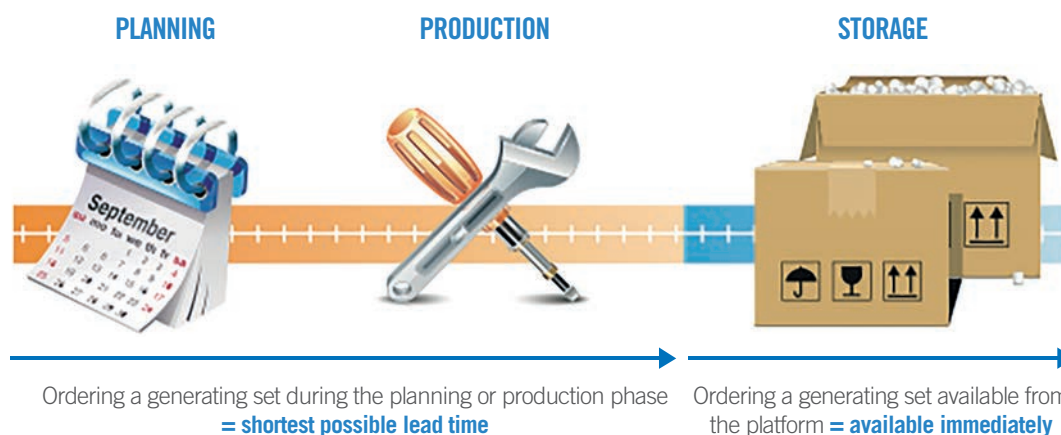
# X-PRESS RANGE

STANDARD GENSETS  
AVAILABLE IN STOCK

Thirty 50 Hz models from 9 to 830 kVA and twenty-six 60 Hz models from 9 to 750 kW from the Power Products range are in stock worldwide and can be delivered to you within very short lead times. These generating sets are available in open or enclosed versions. Aftermarket options are available to order (silencers, earthing protection, normal/emergency switches, Service First, etc.).

## ► ORDER DIRECTLY BY MAIL

You can place your order directly by mail using the form attached to the stock list sent each week. Cut out the middle man: your order is registered and shipped in the quickest possible time.



### 50 HZ CONFIGURATION AVAILABLE

	9 TO 220 KVA		300 TO 830 KVA	
	OPEN	ENCLOSED	OPEN	ENCLOSED
4-pole circuit breaker	•	•	•	•
Control unit	APM303	APM303	APM403	APM403
Card for measurement	•	•	•	•
Auto pack	•	•	•	•
Prewiring for auto start-up	•	•	•	•
CE label	•	•	•	•
Silencer	•	•	X	•

• Included X Not available

### 60 HZ CONFIGURATION AVAILABLE

	9 TO 60 KW SINGLE-PHASE		11 TO 250 KW THREE-PHASE		250 TO 750 KW THREE-PHASE	
	OPEN	ENCLOSED	OPEN	ENCLOSED	OPEN	ENCLOSED
Circuit breaker	2 poles	2 poles	3 poles	3 poles	3 poles	3 poles
Control unit	APM303	APM303	APM303	APM303	APM403	APM403
Card for measurement	•	•	•	•	•	•
Prewiring for auto start-up	•	•	•	•	•	•
Silencer	•	•	•	•	•	•
Analog pack	• <sup>(1)</sup>	• <sup>(1)</sup>	• <sup>(1)</sup>	• <sup>(1)</sup>	•	•

• Included X Not available      (1) Except PACIFIC range



## SALES OFFICES IN FRANCE

### WEST

#### SDMO BREST

TEL. +33 (0) 2 98 41 13 48  
FAX +33 (0) 2 98 41 13 57

### CENTRAL WEST

#### SDMO CHOLET

TEL. +33 (0) 02 41 75 96 70  
FAX +33 (0) 02 41 75 96 71

### PARIS/NORTH NORMANDY

#### SDMO GENNEVILLIERS

TEL. +33 (0) 01 41 88 38 00  
FAX +33 (0) 01 41 88 38 37

#### SDMO ARRAS

TEL. +33 (0) 03 21 73 38 26  
FAX +33 (0) 03 21 73 14 59

### EAST

#### SDMO METZ

TEL. +33 (0) 03 87 37 88 50  
FAX +33 (0) 03 87 37 88 59

### SOUTH EAST

#### SDMO VALENCE

TEL. +33 (0) 04 75 81 31 00  
FAX +33 (0) 04 75 81 31 10

#### SDMO AIX-EN-PROVENCE

TEL. +33 (0) 04 42 52 51 60  
FAX +33 (0) 04 42 52 51 61

### SOUTH WEST

#### SDMO TOULOUSE

TEL. +33 (0) 05 61 24 75 75  
FAX +33 (0) 05 61 24 75 79



Tous les produits SDMO Industries sont certifiés par un laboratoire accrédité ISO 17025



## SUBSIDIARIES

### GERMANY

#### SDMO GMBH

TEL. +49 (0) 63 32 97 15 00  
FAX +49 (0) 63 32 97 15 11

### BELGIUM

#### SDMO NV/SA

TEL. +32 36 46 04 15  
FAX +32 36 46 06 25

### SPAIN

#### SDMO INDUSTRIES IBERICA

TEL. +34 (9) 35 86 34 00  
FAX +34 (9) 35 86 31 36

### UK

#### SDMO ENERGY LTD

TEL. +44 (0) 16 06 83 81 20  
FAX +44 (0) 16 06 83 78 63

### LATIN AMERICA & CARIBBEAN

#### SDMO GENERATING SETS TEL.

+1 30 58 63 00 12  
FAX +1 30 58 63 97 81

### RUSSIA

#### SDMO MOSCOW

TEL./ FAX +7 495 665 16 98

## OFFICES

### SOUTH AFRICA

#### SDMO SOUTH AFRICA

TEL. +27 (0) 8 32 33 55 61  
FAX +33 (0) 1 72 27 61 51

### ALGERIA

#### SDMO ALGER

TEL. +213 (0) 23 47 05 19  
FAX +213 (0) 23 47 05 15

### DUBAI

#### SDMO MIDDLE EAST

TEL. +971 4 458 70 20  
FAX +971 4 458 69 85

### EGYPT

#### SDMO CAIRO

TEL./ FAX + 20 2 22 69 15 26

### TOGO

#### SDMO WEST AFRICA

TEL. + 228 22 22 63 65

### TURKEY

#### SDMO ISTANBUL

TEL. +90 53 07 35 09 10

Photo credits: Getty Images, iStock, Fotolia, Guillaume Team.  
SDMO is a registered trademark of SDMO Industries. Non-contractual document - In accordance with our product quality improvement policy, SDMO Industries reserves the right to modify, without prior notice, any specifications published in this catalog.



**KOHLER**  
IN POWER. SINCE 1920.



**KOHLER**  
**SDMO**

SDMO Industries - 270 rue de Kerervern  
CS 40047 - 29801 Brest Guipavas cedex 9 - France Tel. +33 (0)2 98 41 41 41

[www.kohler-sdmo.com](http://www.kohler-sdmo.com)