

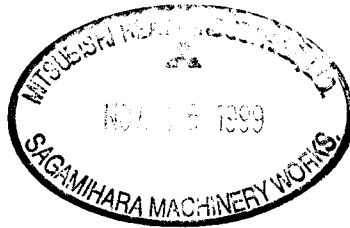
SPECIFICATIONS

MITSUBISHI HIGH SPEED DIESEL ENGINE
MODEL MITSUBISHI S6S-65SG

For MEE

(GENERATOR)

**FOR REFERENCE
ONLY**



DATE Mar. 3.1999

MITSUBISHI HEAVY INDUSTRIES, LTD.

1	管OEM
1	E保
1	小E作
4	MEE
1	控
8	計

CHG	DATE	APPROVED	CHECKED	DRAWN
		<i>O. Hagata</i>	<i>N. Katayama</i>	T.Hirose
1	1999.Nov.18		<i>Y. Matsumaru</i>	

1. Principal Particulars of Diesel Engine

Standard	All items, unless otherwise specified, are in accordance with JIS and maker's standards
Model	Mitsubishi S6S (MHI No. 32B00-02470)
Type	4 cycle water-cooled, vertical overhead valve, cylinder in line, swirl chamber type
Number of cylinders	6
Bore × Stroke	94mm × 120mm
Piston displacement	4.996 liters
Compression ratio	22:1
Rotation	Anti-Clockwise rotation as viewed from flywheel side
Firing order	1-5-3-6-2-4
Output(ISO 3046,With Fan)	St-by ; 45.6kW(62PS)/1500rpm
Total barometric pressure:100kpa	Prime ; 41.2kW(56PS)/1500rpm
Air tempetature:298K	
Relative humidity:30%	
Engine weight(Dry)	Approx. 345kgf
Dimensions(Length)	Approx. 1033mm
(Width)	Approx. 593mm
(Height)	Approx. 748mm
Fuel	ASTM diesel fuel oil No.2-D(JIS K2204 gas oil specification No.2 or 3)
Lubricating oil	API classification service CD class SAE No.30

Fuel consumption	Approx. 245g/kW · h(180g/PS · h) at standard air conditions
Oil consumption	Within 2.7g/kW · h(2.0g/PS · h)
Fuel injection timing	19° BTDC
Idling engine speed	850±20rpm
Speed regulation	Steady state speed regulation at rated speed, within 5%
Mean effective pressure	0.66MPa(6.7kgf/cm ²)
Piston speed	6m/s at 1500rpm
Fuel injection pump	In-Line type
Fuel injection nozzle	Throttle type
Fuel filter	Filtering paper type
Lubricating system	Forced lubrication by trochoid gear pump
Lubricating oil filter	Filtering paper type, full flow
Oil pressure	0.19~0.39MPa(2~4kgf/cm ²) at duty run 0.1MPa(1.0kgf/cm ²) min. at low idling
Oil capacity	12 liters (Oil pan 11 liters, high level, Oil filter etc. 1 liters)
Cooling system	Forced circulation of fresh water by centrifugal pump with thermostat
Engine water capacity	Approx. 8 liters

Alternator	12V - 50A
Voltage regulator	IC type (Built in alternator)
Starting system	Electric starting, Starting moter 12V-3.0kW, With heater plugs

Recommendatory Exhaust Back Pressure	Max 6.7kPa(50mm mercury)
---	--------------------------

Recommendatory Air Intake Resistance	0.98~1.96kPa(100~200mm water) (Initial stage)
---	---

Engine color	Black
--------------	-------

<Remarks>

①with Fan	(ϕ 500 Pusher, pulley ratio 1.3)
-----------	--

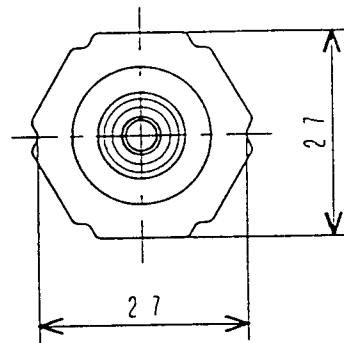
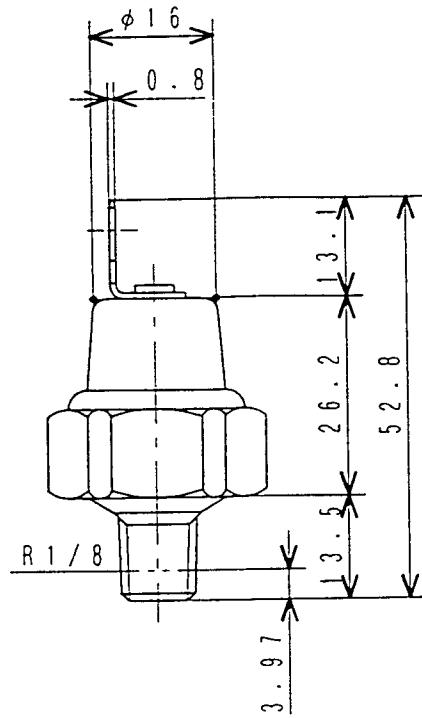
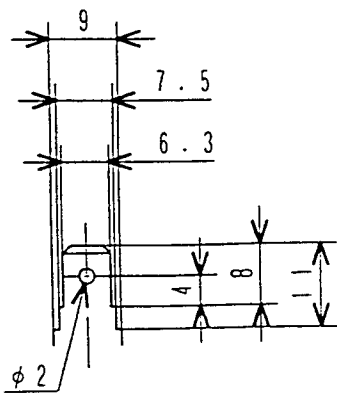
②	
---	--

③with Switch,Thermo	(MC880900	... 1)
---------------------	-----------	--------

④with Switch,Oil Press.	(MC840219	... 1)
-------------------------	-----------	--------

2. Accessories (Loose Supply)

	Parts Name	Parts No.	Q' ty	Remarks
1	SWITCH,OIL PRESSURE	MC840-219	1	Attached To Engine
2	SWITCH,THERMO	MC880-900	1	
3	STOP SOLENOID	32A87-06010	1	
△ 4				
△ 5				
△ 6				
△ 7				
△ 8				
△ 9				
△ 10				

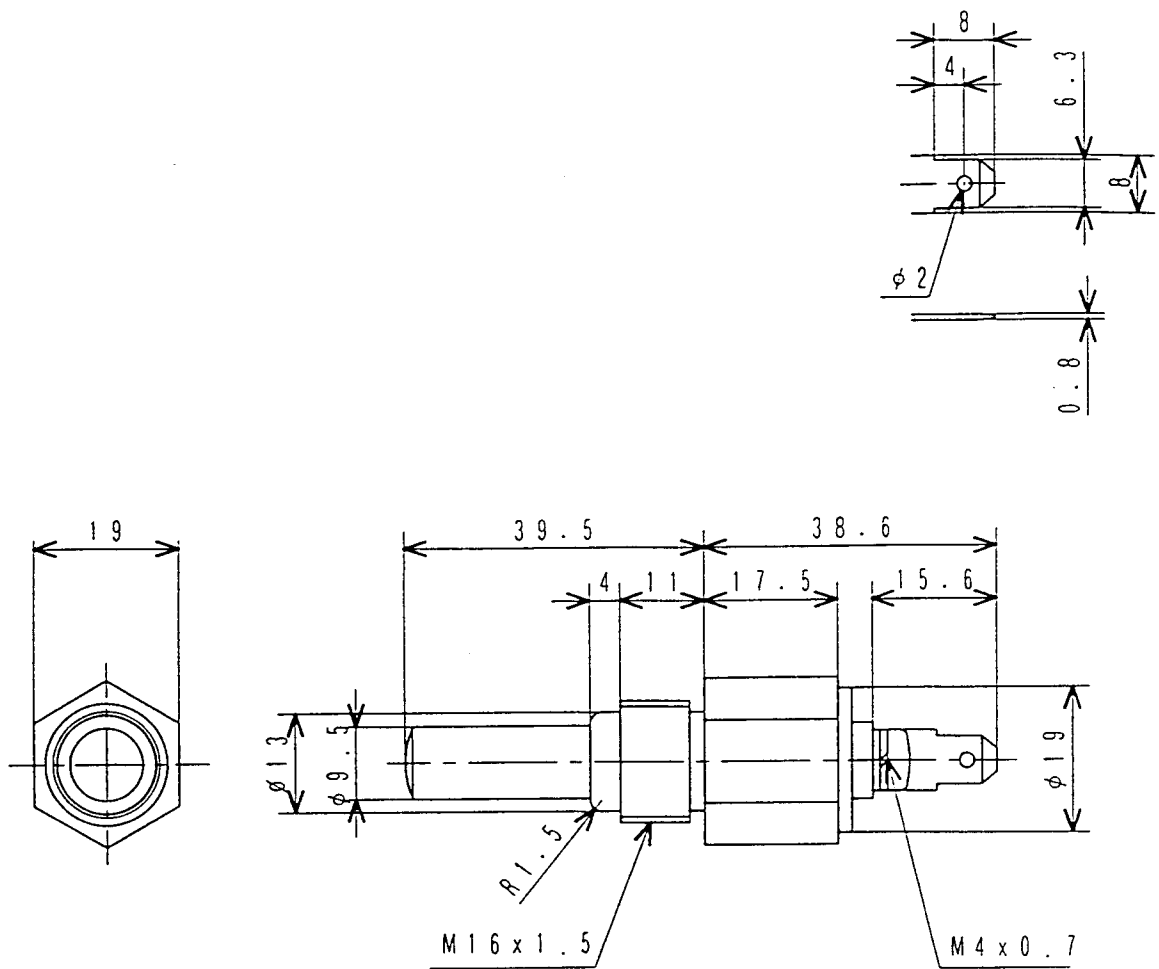


仕様
SPECIFICATIONS

作動圧力 OPERATING PRESS.	49 kPa (0.5 kgf/cm ²)
作動電圧 OPERATING VOLT.	12V-5W 24V-5W

オイルプレッシャスイッチ
SWITCH, OIL PRESSURE

MC840-219

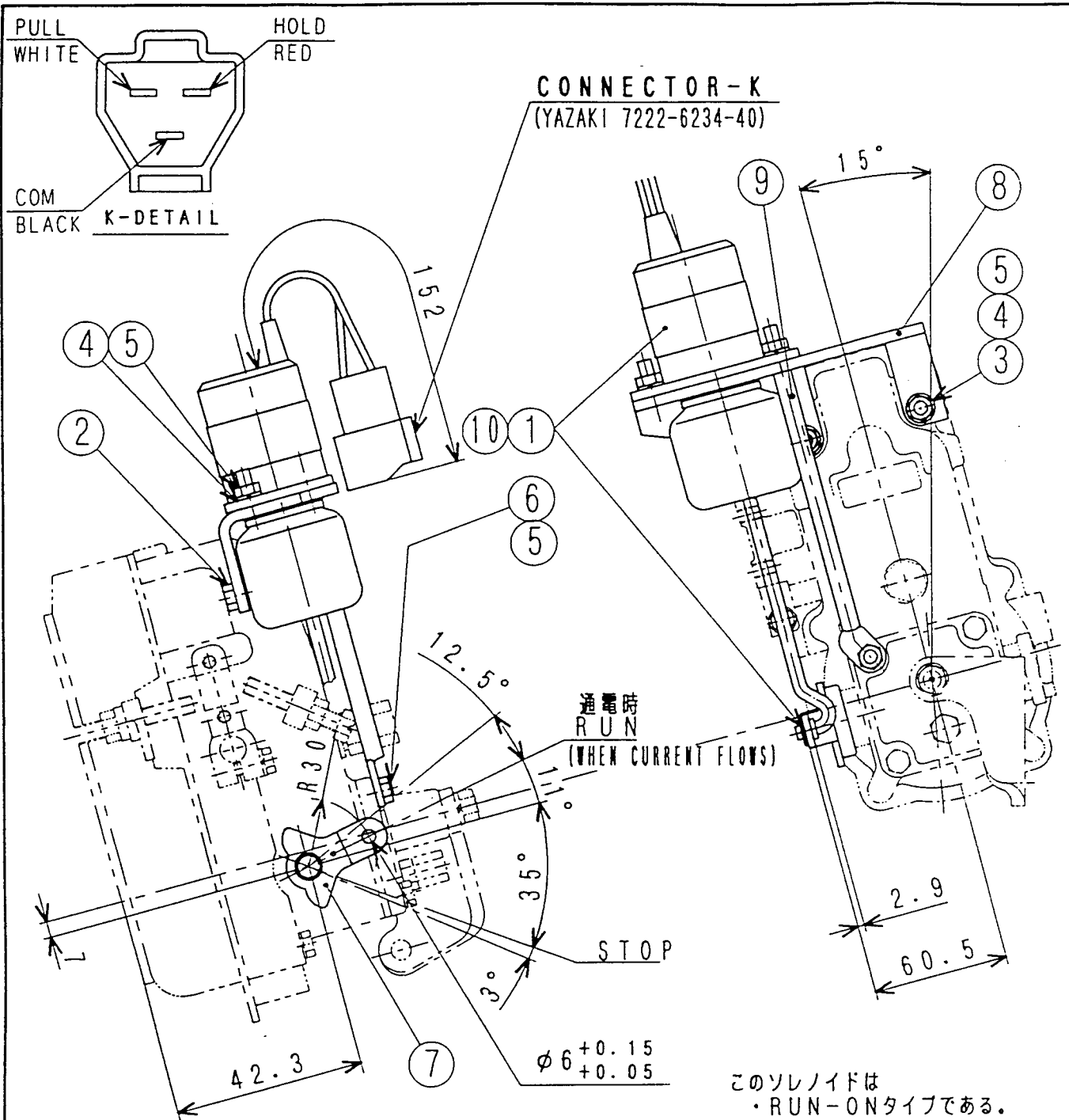


部品番号 PART No.	作動温度 OPERATING TEMP.	
→ MC880-900	温度下降時 DECREASE	≤ 100°C ± 4°C
	温度上昇時 RISE	≥ 100°C ± 2°C
MC880-901	温度下降時 DECREASE	≤ 105°C ± 4°C
	温度上昇時 RISE	≥ 105°C ± 2°C

定格負荷 RATED LOADED	1A以上 MIN.	0.5A以上 MIN.
定格電圧 RATED VOLT.	12V	24V

サーモスイッチ
SWITCH, THERMO

MC880-900



このソレノイドは
・RUN-ONタイプである。
THIS SOLENOID
IS A RUN-ON TYPE

仕様
SPECIFICATIONS

	32A87-06010	32A87-06020	
10	32A87-07020	SOLENOID ASSY(24V)	1
9	32A87-05400	ROD, SUPPORT	1
8	32A87-05300	BRACKET	1
7	32A87-05700	LEVER, STOP	1
6	32A87-05600	STUD	1
5	F2300-06000	NUT	5
4	F2515-06000	WASHER, SPRING	4
3	F2500-06000	WASHER, PLAIN	2
2	34287-02602	STUD	2
1	32A87-07010	SOLENOID ASSY(12V)	1
SYM	PART No.	PART NAME	QTY

部品番号 PART No.	32A87-06010	32A87-06020
定格電圧 RATED VOLTAGE	12V	24V
作動温度 OPERATING TEMPERATURE	-30° ~ 90° C	
吸引電流 PULL COIL CURRENT	55A(at 20°C)	29A(at 20°C)
保持電流 HOLD COIL CURRENT	1.1A(at 20°C)	0.6A(at 20°C)

ストップソレノイド
STOP SOLENOID KIT (ETR) 32A87-06010